

# LQ35L 3.0

## Thermal Monocular



With a basic magnification of 1.9x, a 640x512 detector, and a 35mm F1.0 lens, a 1000m LRF , the LQ35L 3.0 offers unparalleled performance for professional hunters and mid-to-long-range applications. Its 7.5° (13.1m at 100m) field of view and a detection range of up to 1800m ensure exceptional detail in vast, open spaces, making it the ultimate choice for users seeking premium quality with proven shutterless technology.

### ● Key Feature

- Up to 640×512 Thermal resolution
- High-sensitivity thermal module with NETD < 15 mK (@25°C, F# = 1.0).
- 35 mm, F1.0 lens with thermal detection range up to 1800 m
- HIKMICRO Shutterless Imaging System (HSIS)
- AI-powered Image Pro 3.0 and Zoom Pro algorithms
- 0.49-inch OLED display with 1920 × 1080 resolution
- Up to 1000m Laser Range finder
- Replaceable and rechargeable 18650 battery provides up to 4.5 hours of continuous operation at -20°C

## • Specification

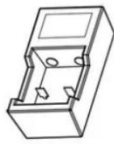
<b>Thermal Module</b>	
Image Sensor	VOx Uncooled Focal Plane Arrays
Max. Resolution	640x512
Frame Rate	50Hz
Pixel Interval	12 $\mu$ m
Response Waveband	8 $\mu$ m to 14 $\mu$ m
NETD	Less than 15 mK (@25°C),F#=1.0
Lens (Focal Length)	35mm, f1.0
Focus Mode	Focus Ring
Detection Range	1800m
Min. Focusing Distance	3.5m
Magnification	1.9x - 15.2x (8x)
Field of View(H × V), Degrees / m @100m	12.5°×7.5°/21.9m×13.2m
<b>Image Display</b>	
Display	1920x1080, 0.49 inch, AMOLED
Palettes	Black Hot, White Hot, Red Hot, Fusion, Red Monochrome, Green Monochrome
Exit Pupil	6mm
Eye Relief	20mm
Diopter (Range)	-5D to +3D
Brightness Adjustment	Yes
Tone Adjustment	Cold, Warm
Contrast Adjustment	Yes
Zoom Pro	Yes
HSIS (HIKMICRO Shutterless Image System)	Yes
Image Pro 3.0	Yes
<b>System</b>	
Record Video	Yes
Capture Snapshot	Yes
Audio Recording	Yes
Standby Mode	Yes
Built-in Memory	Built-in EMMC (64 GB)
PIP	Yes
Hotspot	2.4 GHz/5 GHz Wi-Fi Waveband
Hot Track	Yes
Distance Measurement	Yes
Local Album	Yes
<b>Power Supply</b>	
Battery Type	Replaceable and Rechargeable Li-ion 18650 Battery
Battery Operating Time	5-hour continuous running with hotspot on (@25°C)
	4.5-hour continuous running with hotspot on (@-20°C)
Type-C Power Supply	5V DC, 2A Supports External Power Supply, Support Direct Charging

General	
Protection Level	IP67
Dimension	173.3 x 66.8 x 49.3 mm
Weight	410.7g with battery
Working Temperature	From -30°C to 45°C (-22°F to 113°F); Humidity: 90% or Less
Laser Rangefinder	
Safety Class for Laser	Class 1
Wavelength	905nm
Max. Measuring Range	1200m
Measurement Accuracy	± 1m
Min. Measuring Range	5m

## ▪ Available Model

HM-TSF6-35Y1G/WIL-LQ35L 3.0

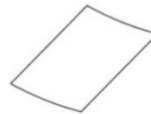
## ▪ Dimension



Battery Charger (×1)



Battery (×2)



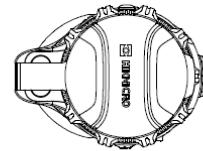
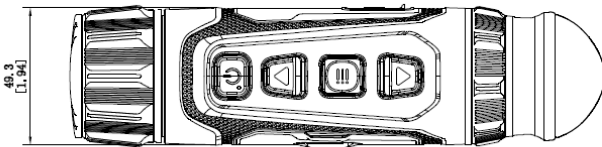
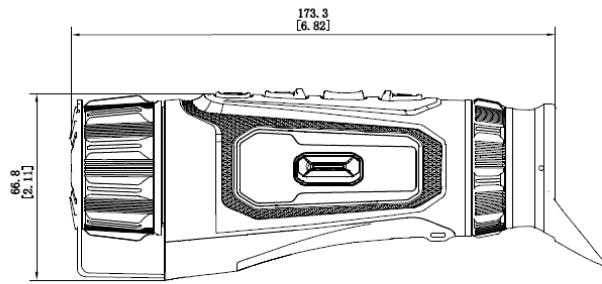
Lint-Free Cloth (×1)



Type-C Cable (×1)



Quick Start Guide(×1)



▪ **Accessory**

▪ **Included**

**HM-3632DC**  
Battery

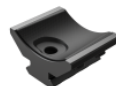


▪ **Optional**

**HM-OUTDOOR-POUCH**  
Monocular Pouch



**HM-RMB-LF**  
HM-RMB-LF





HIKMICRO SIGHT



Hikmicro Hunting.Global   HIKMICRO Outdoor   www.hikmicrotech.com   hikmicro hunting.global   HIKMICRO   info@hikmicrotech.com

Room 313, Unit B, Building 2, 399 Danfeng Road, Xixing Subdistrict, Binjiang District, Hangzhou, Zhejiang  
© Hangzhou Microimage Software Co., Ltd. All rights reserved. | Data subject to change without notice!