



MODULAR TRAINING WEAPON OWNER'S MANUAL



WOLVERINE AIRSOFT

www.wolverineairsoft.com

Table of Contents

Important Safety Information	3
Getting to Know your MTW	4
Getting Started	5
General Use	7
Maintenance	9
Parts	12

Don't Forget to Register Your Warranty!

Your MTW is backed by Wolverine Airsoft's limited warranty. Scan the QR code or visit www.wolverineairsoft.com/warranty to read our full warranty and register your MTW.



Important Safety Information



Always wear safety goggles when using your Airsoft gun.
Portez toujours des lunettes de protection lorsque vous utilisez votre réplique. Utilisez siempre gafas protectoras cuando emplee su réplica.



Do not look directly into the gun barrel. Ne regardez pas directement dans le canon de votre réplique. No mire directamente hacia el canon de las réplicas.



Never aim or shoot at people or animals. Always set the selector on "safe" position [except when you are ready to shoot a target]. Ne visez et ne tirez jamais sur une personne ou un animal. Veuillez régler le sélecteur sur la position sécurisée [excepté lorsque vous êtes prêt à tirer sur votre cible]. Nunca apunte o dispare hacia personas o animales. Mantenga siempre el seguro en las posición "safe" hasta que este listo para disparar al blanco.



Select a safe place for operating the Airsoft gun. Avoid shooting in public places.
Choisissez un endroit sûr pour utiliser votre réplique à billes, évitez les endroits publics. Escoga un lugar seguro para disparar la réplica. Evite lugares públicos.



Never shoot holding the Airsoft gun side-ways as the BB pellet will curve [this is due to the hop-up system]. Ne tenez jamais la réplique de travers. Les billes peuvent partir à droite ou gauche. [Cela est dû au système de Hop-up]. Jamais agarrar y disparar la réplica horizontalement, por el sistema hop-up los proyectiles BB podrán cambiar de dirección en el aire.



Do not disassemble gun yourself. Always contact your local retailer. Ne jamais démonter ou modifier votre réplique. Veuillez contacter votre revendeur d'airsoft pour toute question. No desarme la réplica usted mismo. Póngase siempre en contacto con el revendedor local.

Proper handling of your replica is critical to the safety and well being of yourself and those around you. When in doubt follow the Four Rules of Gun Safety:

1. Always treat every gun as if it was loaded.
2. Never point a gun at something you are not willing to destroy.
3. Keep your finger off the trigger until you have the weapon pointed at your target and are ready to shoot.
4. Be aware of the backdrop of your target. [i.e. what is behind your target in case you miss or the projectile over-penetrates].

Every day our rights continue to be restricted because people are irresponsible and abuse them. Please be part of the solution, not the problem. Learn your local laws, how your equipment works, how to use it safely, and always exercise responsibility.

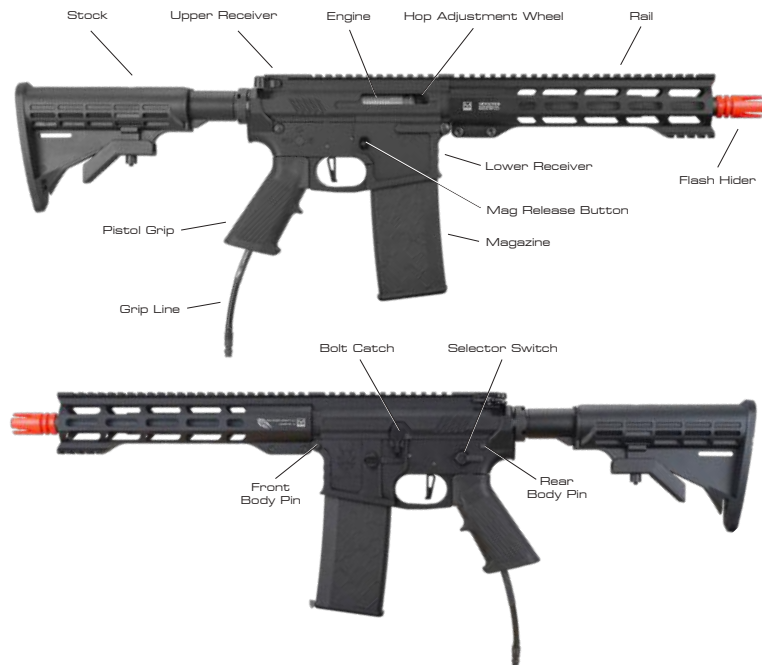
Always treat the airsoft gun as if it were loaded. Do not carry the airsoft gun in open view. Always transport the airsoft gun unloaded in a locked case. Do not openly brandish the airsoft gun, as this may be perceived by others [including law enforcement units] as a threat, and cause prompt reaction. Always use precision 6mm BBs for this airsoft gun. Never use any used or damaged BBs.

Manipulez toujours votre réplique comme si elle était chargée. Ne pas porter cette réplique sur vous en public. Transportez toujours la réplique déchargée, dans une mallette verrouillée. Ne pas ouvertement brandir votre réplique, car cela peut être perçu par d'autres [y compris les unités de police] comme une menace, et provoquer des troubles à l'ordre public. Veuillez toujours utiliser des billes de précision avec votre réplique à billes 6mm. N'utilisez jamais de billes déjà utilisées.

Siempre trate la réplica como si estuviera cargada. No lleve la réplica en vista pública. Transporte la réplica descargada, en una funda cerrada. No blandir la réplica abiertamente, ya que esto puede ser percibido por otras personas [incluso unidades de la policía] como una amenaza, y provocar una reacción instantánea. Utilice siempre BBs 6mm para su réplica. Nunca utilice BBs desperdiciados o dañados.

Getting to Know your MTW

Your Wolverine Airsoft MTW is a precise instrument containing many individual components. Before you begin, please see the diagram below and familiarize yourself with each component. Your MTW may come with different components than picture below depending on the series and trim level.



MTW-9



MTW Forged/Milspec Series



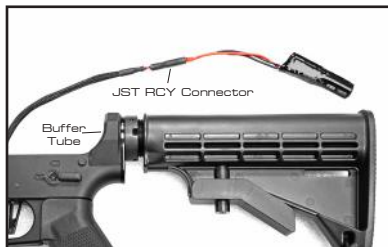
Getting Started

Before using your MTW, you will need to assemble it with a few additional items not included.

Items You will need

- 7.4 LiPo battery which will fit inside the MTW buffer tube. Most batteries in the 250-500 mAh range will work. (The MTW Milspec Series with Reaper M does not require a battery).
- Charged HPA tank (Always carefully follow the tank manufacturer's instructions when filling and using HPA tanks. They are very safe when used properly, but when misused or abused, they can cause serious injury or death.
- STORM Regulator or other airsoft regulator in the 60-140 PSI range.
- Air line with Foster spec fittings (standard in US airsoft market)

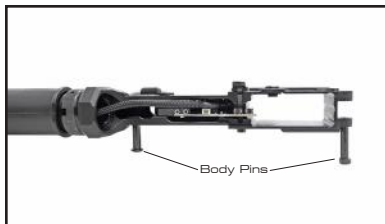
Pull the 2-Pin JST RCY connector out from the buffer tube and connect the battery. Note that the battery will always draw current when connected, so the MTW should not be stored with the battery connected.



Insert the battery fully into the buffer tube. The braided line should lay to the left side of the control board wire guide. On the Forged Series, the Premium FCU should also be inserted into the buffer tube.



Completely extend the body pins on the lower receiver. Note that the pins on a new MTW can be stiff and you may find it easier to do this using a non-marring punch such as the backside of a plastic handled screwdriver to get the pin started.



Attach the upper and lower receivers by lining up the front lugs and pushing the body pin all the way through. Insert the air line through the lower receiver and pistol grip. Finally, close the upper and lower receivers and push in the rear body pin, ensuring the braided wire is not pinched in the process.



Load the magazine and insert it into the lower receiver. We recommend 0.28g or higher BBs. Then, **press the bolt catch** to reset the automatic empty magazine detection and enable firing.



Mount your regulator to your tank and set the pressure to 100 PSI (see manufacturer's instructions). Connect the tank air line by pulling down on the collar of the Foster fitting and pushing the male fitting into the female.



General Use

Stock Adjustment/ Removal

The stock can be adjusted to a comfortable length by squeezing the adjustment arm and sliding the stock along the buffer tube.



To remove the stock, firmly grasp the adjustment arm and pull it downward until the stock slides freely from the buffer tube.



Premium Stock Removal

If your MTW came with the DLG tactical stock, it can be removed by squeezing the adjustment arm hard enough so that it clicks twice.



Mode Select

The selector switch can be used to toggle your MTW between three firing modes: Safe, Select-Fire and Full Auto. [Note: Full-Auto mode is not available in the Milspec Series as well as some MTWs sold in certain countries.]



Hop-Up Adjustment

The amount of hop-up can be adjusted with the adjustment wheel accessible through the ejection port on the MTW's right side. Rotating the wheel clockwise will increase the amount of hop-up.



Reloading a Magazine

Press the mag release button on the MTW's right side to eject a magazine. The MTW is designed for use with proprietary Wolverine Airsoft magazines with empty mag detection and is compatible with most AEG M4-style magazines.



MTW



MTW-9

When a magazine is emptied, the empty mag detection activation lever will make contact with the control board and prevent firing.



After inserting a new magazine, press the bolt catch on the MTW's left side to reset the empty mag detection and allow firing again.



Maintenance

Engine/Hop-Up Removal

Remove the front and rear body pins and separate the upper and lower receiver and disconnect the battery. Use a hard tool like an allen wrench to carefully lever the feed tube assembly out of the upper receiver.



Gently pull straight up on the gripline to pull the contact yoke out of place. Then, use a hard tool like an allen wrench to pull the contact yoke connector pin out of the engine.



Feed the end of the gripline into the upper receiver and out the rear. Pull the airline straight out. It will bend sharply during this process but it will not be damaged. Then, use the airline to pull the engine out of the receiver. You can also pull the hop-up and barrel assembly out at this point.

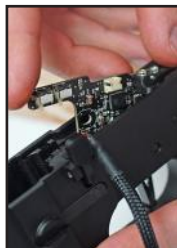


Control Board/Trigger Board Removal

Remove the front and rear body pins and separate the upper and lower receiver and disconnect the battery. Use a hard tool like an allen wrench to slide the trigger spring away from the control board/trigger board and relieve tension on the front trigger pin.



Use the allen wrench to push the front trigger pin through the receiver and then pull it completely out. Then, pull the control board/trigger board straight up from the receiver.

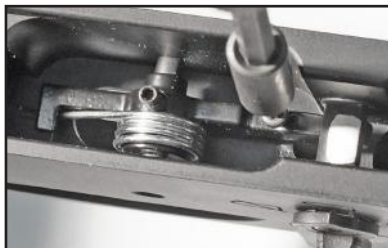


Trigger Adjustment

The amount of travel between the trigger and trigger switch can be adjusted with the trigger adjustment screw and a 1.5mm hex wrench.



With the MTW Spartan Board or trigger board removed, rotate the adjustment screw clockwise to decrease travel and counter-clockwise to increase travel.



Optional Receiver Tension Screw

MTW's manufactured after March 1, 2022 include an optional nylon screw and hole in the lower receiver. If you want a tighter fit of the upper and lower receivers, it can be installed with a 1/8" allen wrench and adjusted to add tension to the upper receiver rear lug. You will have to install your battery in the grip when using the screw.



Additional Documentation

Electronics

For help with tuning and adjusting settings available to your MTW, please see the particular owner's manual for your electronics at <http://www.wolverineairsoft.com/documentation>

Billet/MTW-9



[Spartan Electronics](#)

Forged



[Premium FCU](#)

Engine

For help with maintaining your HPA engine, please see the particular owner's manual for your engine at <http://www.wolverineairsoft.com/documentation>

Billet/MTW-9 Forged



[INFERNO](#)

Milspec



[REAPER M](#)

Hop-Up

For help with maintaining your hop-up, please see the particular owner's manual for your hop-up at <http://www.wolverineairsoft.com/documentation/>

Most MTWs



[MTW Poly/CNC Hop-Up](#)

Forged/Milsec through 2021

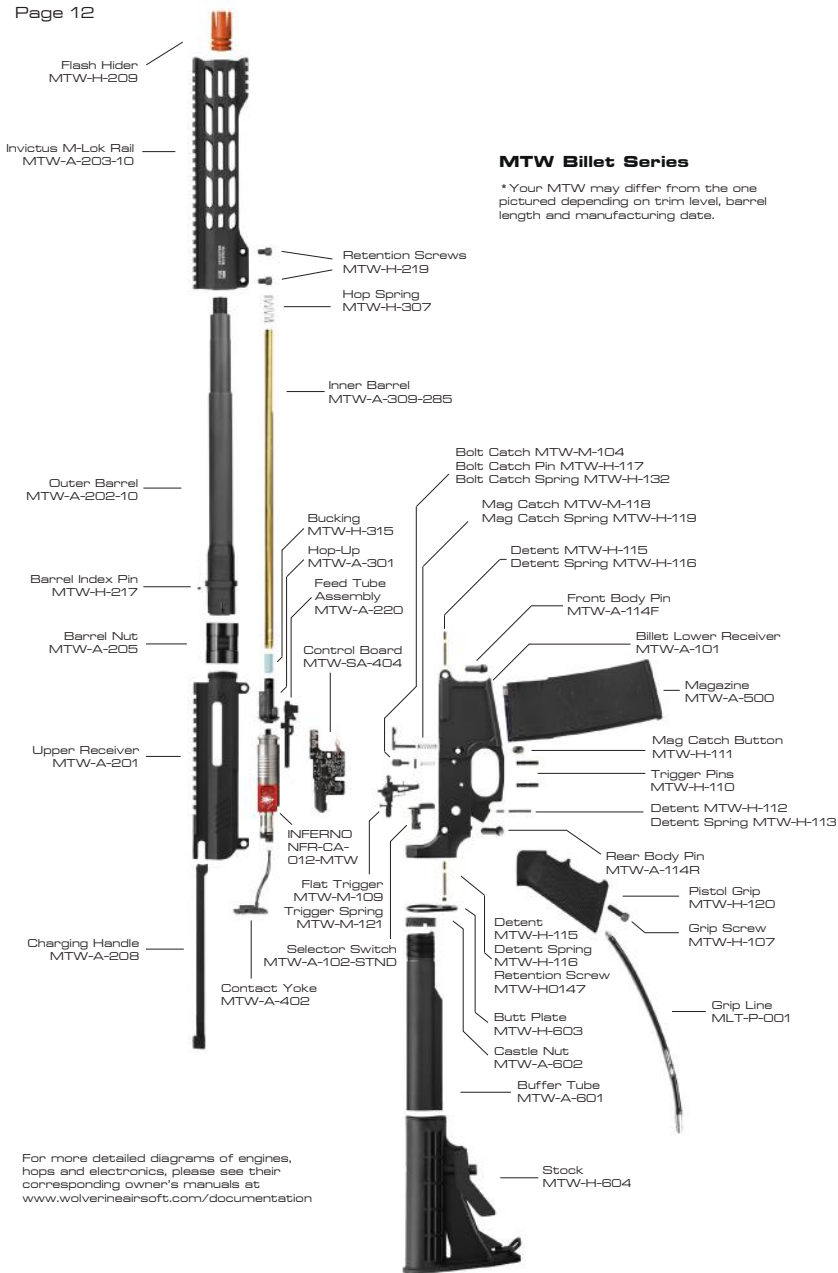


[PHOENIX Hop](#)

Guides, Videos and More...

You can find owner's manuals, maintenance guides, installation videos and more <http://www.wolverineairsoft.com/documentation>.

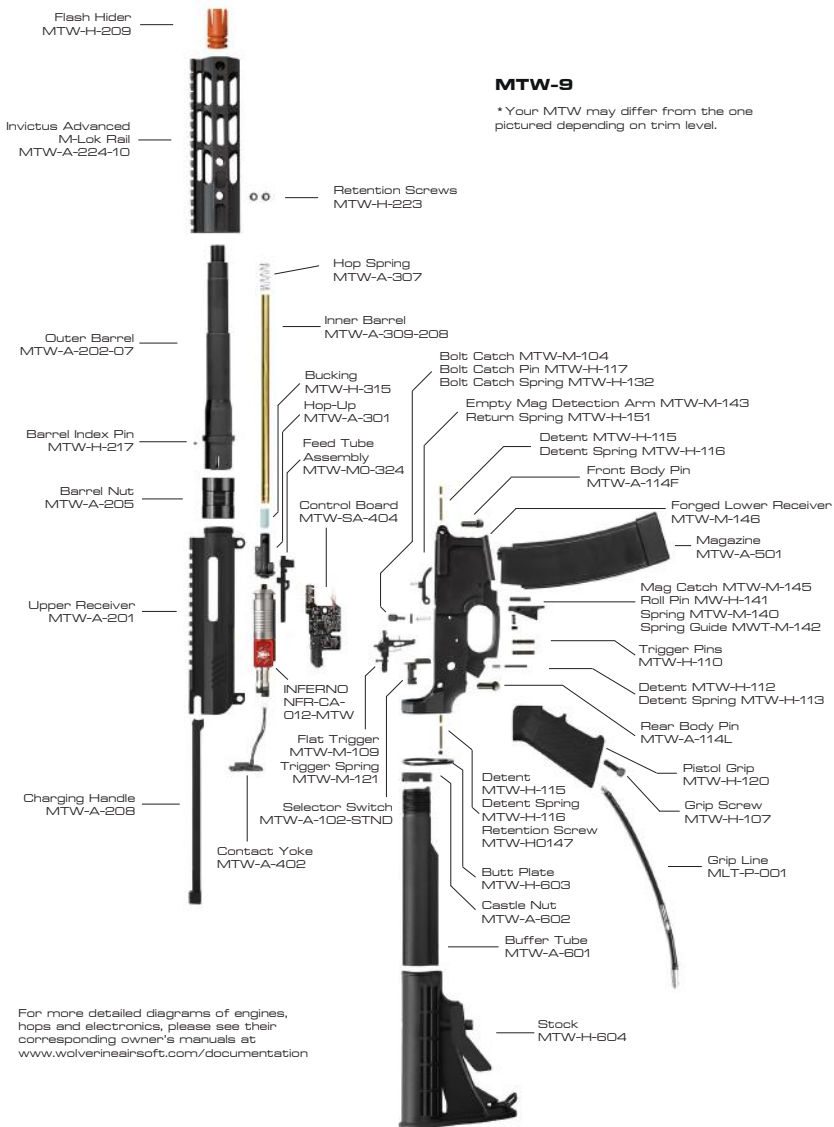




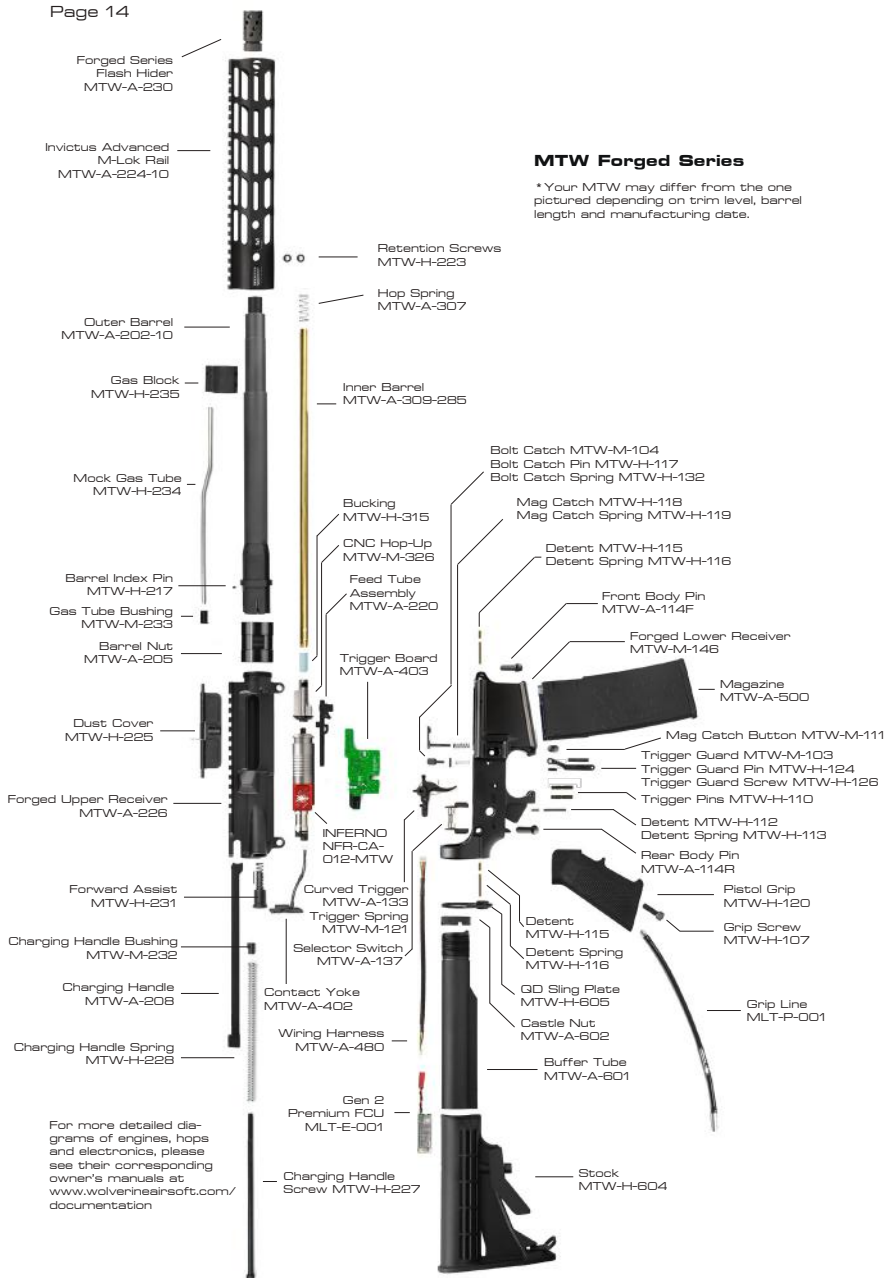
MTW Billet Series

* Your MTW may differ from the one pictured depending on trim level, barrel length and manufacturing date.

For more detailed diagrams of engines, hops and electronics, please see their corresponding owner's manuals at www.wolverineairsoft.com/documentation



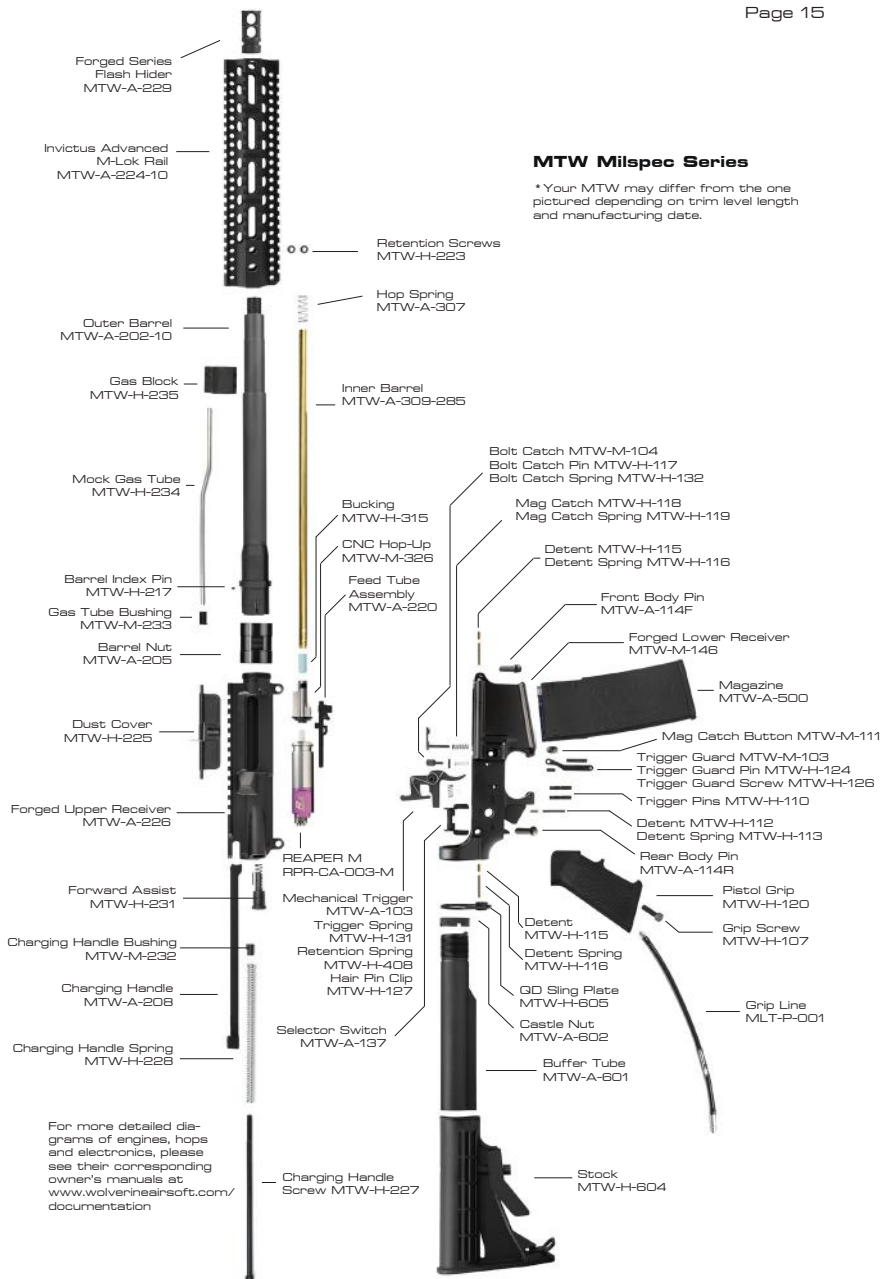
For more detailed diagrams of engines, hops and electronics, please see their corresponding owner's manuals at:
www.wolverineairsoft.com/documentation



MTW Forged Series

* Your MTW may differ from the one pictured depending on trim level, barrel length and manufacturing date.

For more detailed diagrams of engines, hops and electronics, please see their corresponding owner's manuals at www.wolverineairsoft.com/documentation



**Need professional
help?**

To find a retailer close to you visit:
www.wolverineairsoft.com/dealers



www.wolverineairsoft.com