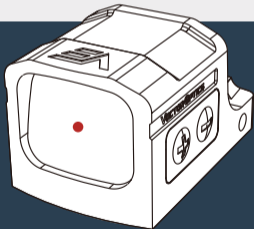


VECTOR OPTICS®

FRENZY

RED DOT SIGHT USER MANUAL



SCRD-68

READ IT BEFORE USE!!!

READ AND UNDERSTAND THE CONTENTS OF YOUR FIREARM'S AND SCOPE MANUAL. FOLLOW ALL STANDARD SAFETY PRECAUTIONS AND PROCEDURES DURING FIREARM OPERATION.

▼ *Scan the QR code to learn more about VectorOptics*



VECTOROPTICS



USER MANUAL



FACEBOOK



INSTAGRAM



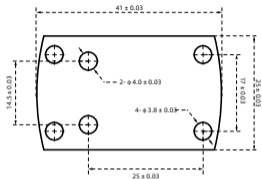
*NEVER LOOK AT THE SUN THROUGH THE RED DOT SIGHT (OR ANY OTHER OPTICAL INSTRUMENT).
IT MAY PERMANENTLY DAMAGE YOUR EYES.*

MAKE SURE FIREARMS ARE UNLOADED AND POINTED IN THE SAFE DIRECTION.

CONTENTS

FOOTPRINT & MOUNTING	4
SCREWS	5
ZEROING	6
TURNING ON & ILLUMINATION ADJUSTMENT	6
BATTERY EXCHANGE	8
MAINTENANCE	9
STORAGE	9
RETICLE	10
WARRANTY	11
NOTES	13

MGT™ Red Dot Footprint











Setting: mm

MOUNTING

The red dot sight is intended for use on pistol slides. It adopts an industry-standard mounting interface and is compatible with the footprint that meets the criteria shown above. The red dot sight can also accept a picatinny or dovetail mount with a compatible footprint.

SCREWS MAY COME WITH THE SIGHT:

	#1	#2	#3	#4
	M3x0.5	M3.5x0.6	M3.5x0.6	M4x0.7
				
Effective Length:	11MM	8MM	10MM	7MM
Head Type:	Light Tapered	Tapered	Tapered	Tapered
Head Drive:	Torx T10	Torx T10	Torx T10	Torx T10
	#5	#6	#7	#8
	M4x0.7	#6-32x0.35	#6-32x0.45	#6-32x0.45
				
Effective Length:	8.5MM	7MM	9.5MM	9.5MM
Head Type:	Tapered	Tapered	Light Tapered	Light Tapered
Head Drive:	Torx T10	Torx T10	Torx T10	Hexago

ZEROING

The sight features elevation and windage adjustments. Referring to the point of impact you will need to adjust both windage and elevation screws. The elevation is the vertical (up and down) adjustment, usually on the top of the sight. Windage is the horizontal (left-to-right) adjustment, usually on the right of the sight. With the sight is mounted aim at a target 25 yards away. Slowly shoot a small 3 to 5 round test group onto your target.

TURNING ON & ILLUMINATION ADJUSTMENT

The sight is activated by using the digital on/off switch placed on the left of the sight. The sight has 9 levels of visible & 2 NV dots. Press and hold the '+' switch for 1 second to turn the unit on. Subsequently press the switch will increase the dot intensity. Press the '-' switch will decrease the dot intensity.

Press and hold the '+' switch for more than 3 seconds to turn the sight off.

Motion Sensor Illumination (MOS): If the sight comes with this feature, it will power off when it is at rest after 3 minutes and power on when it senses any motion.

BATTERY EXCHANGE

The red dot sight is powered by 1 piece of the CR1620 button battery. Should the dot grows dim or not turn on, you will need to exchange the battery. To exchange the CR1620 battery, release the screws on the battery compartment tray. Pry the tray out, put or replace a new CR1620 battery with positive '+' side facing upwards. Push back the tray and fasten the screws.



WARNING

- **INGESTION HAZARD:** This product contains a button cell or coin battery.
- **DEATH:** or serious injury can occur if ingested.
- A swallowed button cell or coin battery can cause *Internal chemical burns* in as little as **2 hours**.
- **Keep new and used batteries out of reach of children.**
- **Seek immediate medical attention** if a battery is suspected to be swallowed or inserted inside any part of the body.
- **Battery misuse or abuse may result in leakage, fire or explosion.**



MAINTENANCE

Your red dot sight, though amazingly tough, is a precision instrument that deserves reasonable cautious care.

- When cleaning the lens, first blow away any dirt and dust, or use a soft lens brush. Fingerprints and lubricants can be wiped off with lens tissue, or soft clean cotton cloth, moistened with lens cleaning fluid.
- All moving parts of the red dot sight are permanently lubricated. Do not try to lubricate them.
- No maintenance is needed on the red dot sight's outer surface, except to occasionally wipe off dirt or fingerprints with a soft cloth.
- Use lens covers whenever convenient.

STORAGE

Avoid storing the red dot sight in hot places, such as the passenger compartments of vehicles on hot days. The high temperatures could adversely affect the lubricants and sealants. A vehicle's trunk, a gun cabinet, or a closet is preferable. Never leave the red dot sight where direct sunlight can enter either the objective lens. Damage may result from the concentration (burning glass effect) of the sun's rays.

RETICLE

Dot Size



3MOA Red Dot

VECTOR OPTICS TAILED VIP LIFETIME WARRANTY

Your VectorOptics Continental, Tauron, Paragon, Scrapper, and Frenzy line products are covered by our T-VIP lifetime warranty. We will, at our option, either repair or replace your VectorOptics product without any cost if it is damaged or defective. If we can't repair your damaged product, we will replace it with a brand new one in perfect condition. We proudly stand behind our products. You have our word that we will do what it takes to retain your business as a satisfied customer. You can count on our T-VIP lifetime warranty.

- Unlimited full lifetime warranty.
- Reply to you in 1 working day.
- Free repair or replacement.
- Fully transferable.
- No invoice or receipt is needed.
- No question asked, however, we do appreciate your feedback.
- We pay for shipping back to you.

This warranty does not cover product loss, theft, deliberate damage, abuse, misapplication, or modification. This warranty does not apply to electronic components or batteries.

For warranty service please contact our Customer Service Department online at service@vectoroptics.com for return instructions. If you need to return the product, please ensure the shipment and keep the tracking records. We can not be responsible for your product until it has been received by our Customer Service Department. For products not directly purchased from us, please contact the local dealer for applicable warranty info.

Any warranty must be registered and complete warrantyterms by the link:

warranty.vectoroptics.com

We thank you for your business. Be Safe and Have Fun!



NOTES

NOTES

NOTES

FRENZY

RED DOT SIGHT

Manual # Frenzy Series

2024033101



🌐: www.vectoroptics.com

@vector_optics