

*Daystate*



**ALPHA  
WOLF**

**OFFICIAL HANDBOOK**

## SAFETY

### Never point your air rifle at anyone, nor at anything other than a legitimate target

- ✓ Always check your air rifle is not loaded when you first pick it up
- ✓ Always treat your air rifle as if it were loaded, even if you know it is not
- ✗ Never shoot on land where you do not have permission to shoot
- ✓ Always use a safe, large backstop to catch your pellets - and pay due attention to what is behind the target should you miss
- ✗ Never leave your air rifle unattended
- ✓ Always store your air rifle and pellets separately and securely so that no unauthorised person can access or use them
- ✓ Always apply the safety catch between shots
- ✗ Never leave a pellet in the breech when storing your air rifle; ideally remove the magazine

**Know and abide by the air rifle laws applicable in your state or country**



Store your Alpha Wolf securely when not in use

## CONTENTS

SAFETY	2
GENERAL INFORMATION	4
FILLING YOUR AIR RIFLE WITH COMPRESSED AIR	5
LOADING THE RIFLE	6
FITTING A RIFLE SCOPE	7
ZEROING THE RIFLE	8
PELLET RECOMMENDATIONS	9
BATTERY AND CHARGING	10
PROGRAMMING POWER SETTINGS	11
OTHER SETTINGS	17
BARREL AND CALIBER CHANGE	18
REMOVING THE STOCK	19
ADJUSTMENTS	20
ACCESSORIES	23
RECOMMENDED MAINTENANCE	24
WARRANTY	27



### **WARNING! HIGH STRENGTH MAGNETS**

**The side-lever, filling cover and magazine contain high strength magnets. Care should be taken with close proximity to heart pacemakers and credit cards**

## GENERAL INFORMATION

Congratulations on choosing the Daystate Alpha Wolf air rifle which features an electronic, programmable action incorporating a touchscreen display. Your rifle has been hand-assembled using the finest materials available, from parts precision-made using CNC engineering technology. This rifle is the culmination of the company's involvement with precharged pneumatic (PCP) air rifles and uses knowledge gained from manufacturing this type of air rifle for over 40 years, making your Daystate one of the most accurate and reliable rifles available today. Use this handbook to help you get the best from it.

This handbook is being constantly updated. For the latest information, go online to [daystate.com/handbooksguides](http://daystate.com/handbooksguides).

For the latest information on daystate products visit the Daystate at [daystate.com](http://daystate.com)

[www.facebook.com/daystateltd](https://www.facebook.com/daystateltd)

[www.instagram.com/daystate\\_factory\\_uk](https://www.instagram.com/daystate_factory_uk)

Daystate also has an active Owners' Club. This is free to join and can be found online at:

<https://www.facebook.com/groups/DaystateOwnersGroup>

## ELECTRONIC ACTION

The Alpha Wolf incorporates an electronic action, powered by a rechargeable 11.1v Lithium Polymer (LiPo) battery housed in the butt of the rifle. For the rifle to shoot, it must be charged with air (see page 5) and switched ON. The battery must also be sufficiently charged (see page 10).

## SWITCHING ON

To switch on the Alpha Wolf at any time, cycle the safety catch.

If the rifle is already ON and it is just the screen back light that is dimmed, (see page 10), touch the information screen to reilluminate it.

## BATTERY CHARGING

The rechargeable LiPo battery should provide enough power per charge for many hundreds if not thousands of shots. The time the Alpha Wolf is left ON reduces battery run time considerably. Regardless of use, the battery should be topped up every three months.

## FILLING YOUR AIR RIFLE WITH COMPRESSED AIR

**Important: DO NOT USE any gas other than clean, dry compressed AIR**

Fill your Alpha Wolf with compressed air up to 240 BAR pressure from a separate charging unit – either a scuba tank or manual pump – using an air line (hose) connected with the supplied charging connector. The pressure state of air in the buddy-bottle is shown by the gauges on the left side of the rifle, forward of the trigger (fig.1).



fig.1

The needle on the analogue gauge will move gradually after each shot to indicate the reducing air pressure in the buddy-bottle air reservoir. You should monitor the position of this gauge to know when to refill your rifle. A Low Pressure warning will also be shown on the touchscreen display.

## FILLING PROCEDURE

1. Screw on the supplied snap-on female charging connector to your hose assembly
2. Firmly attach the snap-on connector to the inlet valve. Ensure the connector's outer sleeve has locked and that the connection is secure (fig.2 & 3)



fig.2

3. Close the bleed screw on your charging unit
4. Slowly open the charging unit's main valve (if using a scuba tank/air bottle), or begin pumping (if using a manual pump), to allow air to transfer into the rifle's main buddy-bottle air reservoir



fig.3

5. Noting the gauge on your charging assembly, fill the rifle to its maximum pressure of 240 BAR
6. Once the required pressure has been reached, turn off the charging unit's main valve (if applicable) and undo the bleed valve to rapidly bleed off the remaining air in the connector hose
7. Remove the snap-on connector from the rifle

**Note:** The bottle contains its own valve, making it possible to buy spare bottles, or to remove the main air source for maintenance or transportation.

## LOADING THE MULTI-SHOT MAGAZINE

**Always remember to keep the muzzle of the air rifle pointing in a safe direction**

- Apply the safety catch
- Pull the side-lever all the way back
- Slide the magazine out of the breech (if deployed)
- Open the front loading gate on the magazine and fully rotate the inner drum one rotation clockwise (fig.5)



fig.5

- While holding the drum against spring tension, insert a pellet into the lower magazine chamber (fig.6). The magazine drum can now be released



fig.6

- Insert pellets into the remaining chambers (fig.7). Close the magazine loading gate
- Insert the loaded magazine into the breech of the rifle
- Push the side-lever forward



fig.7

### THE RIFLE IS NOW LOADED

- Disengage the safety catch and the rifle is ready to fire
- After the shot is taken, recycling the side-lever will cock the rifle and allow the magazine to automatically index. The next pellet will be chambered on the lever's return

**Note:** *The magazine will index each time the side-lever is cycled. To avoid a double-load do not recycle the side-lever without having first fired the rifle.*

The rifle can be dry fired that is fired with no pellets in the breech, without any mechanical damage occurring provided there is air in the rifle.

### IMPORTANT:

- **Always keep the muzzle of your air rifle pointing in a safe direction**
- **Always ensure the last shot has been fired from the barrel before finishing the shooting session, and then remove the magazine**

## MAGAZINE ORIENTATION

A single magazine can be inserted from either the left or right side of the breech. Alternatively, you can load two magazines, one from each side. As one magazine is depleted, open the breech bolt and slide the full magazine across to continue firing (fig.8).



fig.8

## FITTING A RIFLE SCOPE



Daystate recommend MTC Optics for your Alpha Wolf rifle.

### ATTACHING THE MOUNTS

Daystate recommends the use of 20mm (Picatinny) Blueprint Mounts.

- Loosely fix both mounts to the Picatinny rail

- Clamp the rifle, making sure not to damage the stock
- Place a spirit level across the flat part of the breech block and adjust the air rifle until it is level
- Look through the sight and, without moving the air rifle, rotate the scope until the vertical crosshair aligns with a vertical object or plumb line. Tighten all scope mount screws and double-check vertical alignment

### ALIGNING THE CROSSHAIR

To perfectly align the sight, you will need either a vice or Workmate placed on a firm and level surface to hold the air rifle.

## ZEROING THE RIFLE

- Set up a large paper target, with a safe and suitable backstop at around 10 metres
- Fire a test shot and note its position
- Using the elevation and windage turrets on the scope, adjust until the centre of the crosshair and the pellets' point of impact coincide
- Now move the target to your chosen primary shooting distance (zero range) and fine-tune the scope's zero in the same manner\* The Alpha Wolf is fitted with an optic rail that features a bubble level. (Fig.9).

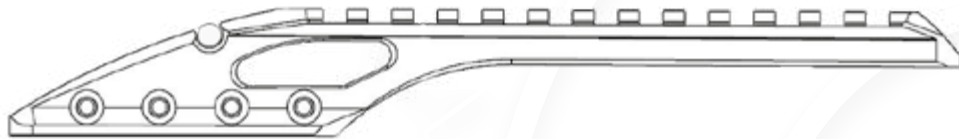


fig.9



## PELLET RECOMMENDATIONS

The power, accuracy and consistency of your Alpha Wolf relies on the quality of the pellets and slugs used. The algorithms used in the Alpha Wolf programming have been achieved using Rangemaster ammunition. Daystate advises the following:-

### Up to 12 foot-pounds energy

- Rangemaster Sovereign\*  
.177 (8.44gr)  
.22 (15.9gr)
- Rangemaster Sovereign Hunter  
.177 (10.3gr)  
.22 (18.3gr)
- Rangemaster Kaiser  
.177 (8.64gr)  
.22 (14.66gr)

### Up to 30 foot-pounds energy

- Rangemaster Sovereign Hunter  
.177 (10.3gr)  
.22 (18.3gr).
- Rangemaster King  
.177 (13.42gr)  
.22 (25.38gr).

### Up to 40 foot-pounds energy

- Rangemaster King  
.177 (13.42gr)  
.22 (25.38gr).

### Over 40 foot-pounds energy

- Rangemaster Emperor Lite  
.30 (44.75gr).
- Rangemaster Emperor  
.177 (15.89gr) .22 (33.95gr) .25 (33.95gr)  
.30 (50.15gr).
- Rangemaster Juggernaut  
.22 (25.3gr).  
.25 (33.49gr).

\*Set-up pellet for UK specification 12ftlb rifles



## BATTERY AND CHARGING

### IMPORTANT: BATTERY IS SHIPPED WITH APPROX 50% CHARGE AND SHOULD BE FULLY CHARGED BEFORE USE!

Your Alpha Wolf air rifle contains a removable three cell Li-Po battery positioned in the rear of the rifle behind the butt plate. The battery is intended to be charged in position using a USB type C cable connected to a 5 volt charger rated to two amps or more.

The charging time will vary depending on the state of discharge of the battery and the output of the charger. Expect between 2 and 8 hours. the battery indicator will continue to show charging as long as the battery is on charge. The battery charging socket is positioned forward of the display screen (fig.10).



fig.10



fig.10a

A USB (C) type charger and cable is supplied with the Alpha Wolf (fig.10a) to charge your battery while in the rifle. In addition a separate battery charger is available as an accessory should you

wish to charge the battery, or a spare, while removed from the rifle.

To remove the battery, first remove the butt plate by releasing the locking lever shown in fig.11. The battery can then be tilted forwards and unplugged from its socket. Take care not to damage the cable on removal.

A battery indicator on the display screen shows the level of charge. Charging can be carried out at any time to top up the battery. In addition, a BATTERY LOW indicator will flash on the display when the battery reaches 20% remaining charge.



fig.11

**Note:** A fully charged battery will provide enough power for many hundreds of shots. Changing out a flat battery for one fully charged may require a powered USB C cable to be inserted for a few seconds to reset the rifle.

### AUTO POWER OFF (STANDBY)

To extend battery run time it is recommended that the safety catch is used between shots. The display screen illumination is timed to dim down 30 seconds after it's activation and the firing system will go into AUTO POWER OFF (standby) to extend the battery run time. You can choose to shorten or extend the

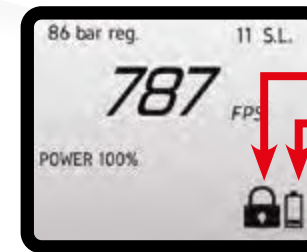
period before the firing system goes to standby from 30 seconds up to a maximum of 1 hour and 30 minutes. To adjust, put the air rifle into program mode and scroll through until you get to **AUTO POWER OFF TIME SET.**

**Note:** If the rifle goes into standby mode with the safety catch in the fire position, it will be necessary to reapply the safety catch and then again switch to fire to reactivate the rifle.

## PROGRAMMING POWER SETTINGS

### UK 12 FOOT-POUNDS

#### UK 12 FOOT-POUNDS - DISPLAY



#### LIGHT/DAY MODE

When the display is locked a padlock will be displayed.

Battery indicator



#### DARK/NIGHT MODE

When the display is locked a padlock will be displayed.

Battery indicator

#### HOME SCREEN LOCK/UNLOCK

Before putting the rifle into program mode, ensure it is unloaded and the safety catch is set to safe. The following procedures should always be carried out with the muzzle pointing in a safe direction.

- Open the side-lever and pull back the trigger, maintaining pressure for three seconds. Release the trigger when the padlock icon disappears. The rifle can now be programmed

- With the side-lever still open, side-swipe the screen to the left to scroll through the available modes

If at any time the side-lever is closed, or the safety set to FIRE, the lock will reapply, and the screen will return to the home screen.

# PROGRAMMING POWER SETTINGS

## UK LICENCE EXEMPT RIFLES

In accordance with UK firearms law, rifles for the UK market are set to not exceed a maximum muzzle energy of 12 foot-pounds.

### UK Test Pellet

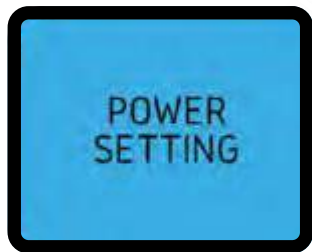
The following pellets are used at our factory to achieve a UK legal power setting:

.177 Rangemaster Sovereign 8.44gr. We recommend a maximum velocity of 790fps

.22 Rangemaster Sovereign 15.9gr. We recommend a maximum velocity of 576fps

If you decide to use a different pellet, you must ensure your Alpha Wolf does not exceed 12 foot-pounds of energy. To do this:

- Use the Alpha Wolf's chronograph setting to determine the velocity of your chosen pellet
- Use a ballistic calculating app or the formula:  
$$\text{Energy} = \text{Pellet weight in Grains} \times \text{Velocity} \times \text{Velocity} / 450395$$
 to calculate muzzle energy
- The Power Setting function can be used to adjust muzzle energy in 5% increments



Press to enter POWER SETTING



Press red buttons to increase and decrease power settings. Power will adjust between 70-100% in 5% increments. Once the desired setting is achieved, press the blue button to set.

## EXPORT OR UK FAC

### EXPORT OR UK FAC - DISPLAY



#### LIGHT/DAY MODE

When the display is locked a padlock will be displayed

Battery indicator



#### DARK/NIGHT MODE

When the display is locked a padlock will be displayed

Battery indicator

### POWER SETTING EXPORT OR UK FAC

The factory shot setting shows default settings as the rifle left the factory and allows the shooter to adjust the muzzle velocity by swiping right from an unlocked home screen. to adjust for changes to caliber, barrel length, pellet weight as well as velocity, press to enter full setup.



Sideswipe right



to go direct to caliber screen



Press to continue with full setup

Press to select or sideswipe a different caliber



to choose a different caliber



Press to select or sideswipe



to choose a different barrel length



Press to select or sideswipe



to choose a different pellet weight



Press red buttons to increase and decrease power settings. Power will adjust based on the previous selections of caliber, barrel and pellet. A table will be loaded with the achievable pellet speeds



Optimal pressure proposed

Current pressure value measured by the pressure sensor

BLUE - Push to select



Optimal pressure proposed

Current pressure value measured by the pressure sensor

RED - Regulator pressure out of range. If the pressure is different from pressure proposed ( $\pm 5$  bar), but can still be selected, however results may not be optimum

In addition to the user program options, there are two further features that automatically apply where relevant. In both cases, the LCD information screen will display the air rifle's status.

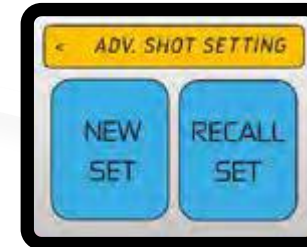
- LOW BATTERY - the battery will need to be recharged
- LOW PRESSURE - the rifle's air cylinder will need to be refilled. The pressure at which the warning will show is dependent on the settings

## ADVANCED SHOT SETTING | EXPORT OR UK FAC

The Alpha Wolf features Advanced Velocity Technology (AVT) that in addition to Factory Settings, contains other advance setting that provide:

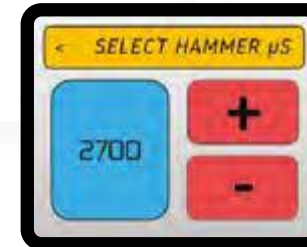
- Fine tune hammer-dwell by microseconds ( $\mu$ s)
- Change voltage to adjust power
- Storing own pre-set data for use with different ammunition types or calibers

The AVT system includes an integrated Bluetooth® module for future inclusion of remote access and other features.

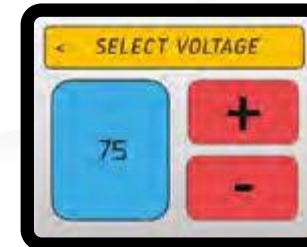


Press NEW SET to create your own user profile

Press RECALL SET to reload a profile you have previously created



Change hammer stroke + / - to change value (a minimum / maximum limit is preset)

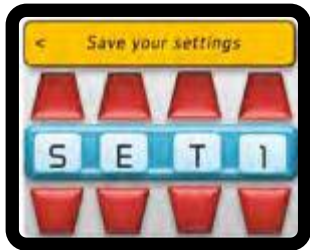


Select voltage + / - to change value (a minimum / maximum limit is preset)



Adjusts the pressure regulator and displays the value in real time when pressure is set, push to enter and go to the next setting





Scroll tabs to set profile name. Press the blue center bar to store




When the gun has just been set, or turned on after being in standby, but no shots have been fired yet, the feet per second (FPS) will not show

## RECALL A SETTING PREVIOUSLY SAVED | EXPORT OR UK FAC



Press RECALL SET



Sideswipe  to choose setting. Press to enter setting

## OTHER SETTINGS

### MAGAZINE SHOT COUNT



If the user selects NO, the screen will return to the home page and the shot count will not be displayed. If the user selects YES, the screen will go to the next page so you can select the magazine capacity



Side swipe the screen select the magazine shot capacity for the calibre you are using

Values available are: 7, 10, 11, 13, 14, 20, 22 and 26

When set to the desired number, push the blue button and the screen will return to the home page showing the shot count



On firing, the screen will count down remaining shots. At zero (0), the screen will start to flash and there will be a buzz and pipping noise

### NIGHT MODE



To set NIGHT MODE, press the ON button. You will return to the home page and you will be in NIGHT MODE. To return to DAY MODE repeat the above process

## AUTO POWER-OFF (STANDBY) TIME



Press to select. Side swipe to enter. Choices are:  
30 seconds, 1 minute (default), 1 minute 30 seconds,  
2 minutes, 5 minutes, 10 minutes, 30 minutes, 1 hour,  
1 hour 30 minutes

## CHRONO ON/OFF



The chrono (chronograph) is set to ON as a default. To switch the chrono OFF, press the blue button which will return you to the home page. If CHRONO is OFF, CHRONO OFF will be displayed on the home page instead of FPS

If the chronograph module is disconnected or faulty, the button colour will change to grey and will not be selectable

## BARREL REMOVAL & CALIBER CHANGE

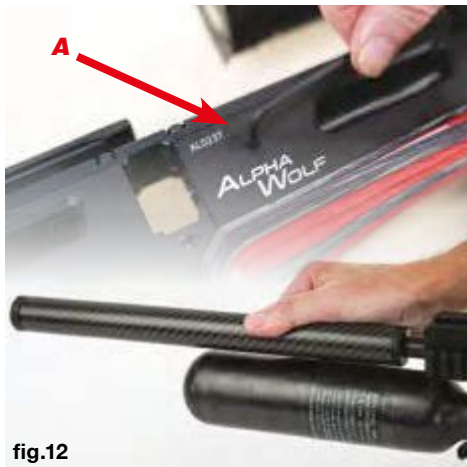


fig.12

The Delta Wolf can be switched between calibers. To remove the barrel, loosen 3mm screw 'A' and without twisting, gently slide the

barrel assembly forward (fig.12). Reassembly is the reverse of this procedure. Ensure the three electrical pins centrally line up with the barrel and breech assemblies.

The breech bolt is also caliber specific. To change the breech bolt, open the breech bolt and remove the 2mm Allen screw 'A' (fig.13).

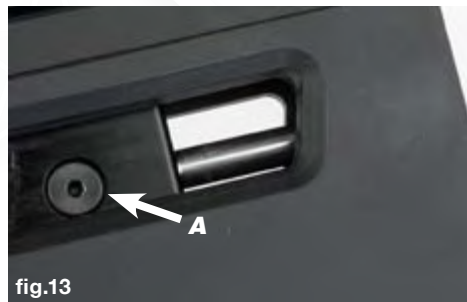


fig.13



fig.14

Remove the butt pad and tilt the battery forward to access the 3mm breech bolt plug (fig.14). Unscrew and remove bolt 'B' and withdraw the breech bolt assembly out the rear of the block. Reassembly is the reverse of this procedure.

## STOCK REMOVAL

To remove the AlphaWolf stock



fig.15



fig.16

1. Remove two short screws in front of the trigger (fig.15)
2. Remove the long stock bolt through the hand grip (fig 16)
3. Carefully ease the stock off the action
4. Take care not to loose the safety spring and safety dowel located in the grip area of the stock (fig.17)



fig.17

**CAUTION:** with the stock removed, care must be taken not to put side-pressure on the exposed safety levers

## STOCK REPLACEMENT

Reverse the above procedure to replace the stock, ensure the safety spring and dowel are in place, ease the stock on by hand only replacing the securing screws when the stock is completely seated. Take care not to damage the rear of the stock as it aligns with the rear body

A full guide converting a DeltaWolf to AlphaWolf can be found online here:  
<https://www.youtube.com/user/DaystateLtd>

## ADJUSTMENTS

### REGULATOR

The advanced Huma-Air regulator fitted to the Alpha Wolf is set at the correct charging pressure for the power and caliber initially supplied. In normal use it should not be necessary to adjust regulator pressure. Changing caliber or large velocity changes on higher power (FAC) Alpha Wolf rifles may require a change in regulator pressure.

To increase regulator pressure, turn adjuster 'A' (fig.18) in an anti-clockwise direction, the pressure indicated on the display screen will increase. To lower regulator pressure, turn the adjusting screw clockwise. When lowering pressure, it is important that the air is removed from the rifle to avoid damaging the regulator.

To remove the air from the rifle, remove the air bottle by unscrewing it anti-clockwise (fig.19) and dry fire the rifle until the secondary chamber is empty (the rifle stops expelling air). Do not have the barrel removed when dry firing.

Refitting the bottle and filling it with air will also fill the secondary chamber with air.



fig.18



fig.19

### SIGHT MOUNT

The telescopic sight rail is a picatinny type made to STANAG 4694 dimensions. It can be moved forwards and backwards to cater for a variety of telescopic sight lengths by slackening the 5mm locking screws (fig.20).



fig.20

### CHEEKPIECE

The lateral and fore/aft positions of the cheekpiece can also be adjusted or switched from the left-to the right-hand side by loosening/re-tightening the 2mm bolts (fig.21).



fig.21

### BUTT-PAD

The butt-pad can be lowered and raised as required by unscrewing the centre 3 mm bolt and re-tightening it when the butt-pad is in the desired position (fig.22).



fig.22

### SIDE-LEVER

The Alpha Wolf is fitted with an ambidextrous stock, and like the magazine's operation, its side-lever can be switched to cock from the right or left.

**Note:** Although it is not necessary to remove the scope rail, we have done so in the illustration for clarity

- With a 3mm Allen key, unscrew and remove the two screws above the cocking lever (fig.23)



fig.23



fig.24

- Pivot the side-lever forward and using the same Allen key to the rear of the now exposed opening, push and slide the blanking plate out of the rear of the breech block (fig.24)

- From the blanking plate side, use a screwdriver to remove the silver slotted screw (fig.25)

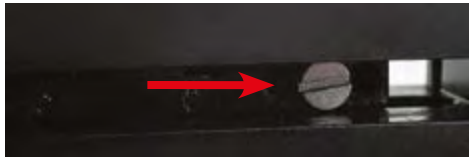


fig.26



fig.25



fig.27

- Re-insert the side-lever assembly on the opposite side (fig.26)
- Using a 3mm Allen key, relocate the side-lever's handle to the underside of the lever (fig.27)
- Refit the blanking plate

- Replace and re-tighten the pivot and blanking plate bolts. Do not overtighten

## TRIGGER

Allen key sizes: 1.5mm throughout with .9mm for trigger shoe adjustment.

Ensure the air rifle's safety switch is in the SAFE position and the air rifle is unloaded.

**Screw A:** Second stage contact screw factory set (DO NOT ADJUST)

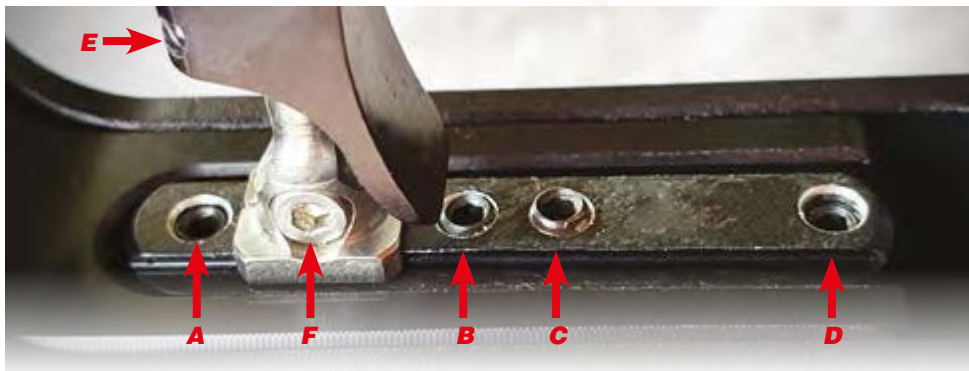
**Screw B:** Second stage weight screw. Adjust clockwise to make heavier

**Screw C:** First stage weight screw. Adjust clockwise to make heavier

**Screw D:** First stage travel screw. Adjust clockwise to decrease trigger travel

**Screw E:** Trigger blade reach adjustment screw. Loosen to move trigger blade to desired position

**Screw F:** Trigger shoe adjustment screw. Loosen to adjust shoe to desired position



## ACCESSORIES

### 0dB SILENCER



### DTD ADAPTOR



### MTC OPTICS RIFLE SCOPES



MTC OPTICS SWAT PRISMATIC 10x30



MTC OPTICS SWAT PRISMATIC 12x50



MTC OPTICS KING COBRA 6-24x50 F2

### PRS

Including:

- Adjustable buttplate
- Adjustable buttplate with mono pod and bag riders
- Cheek riser
- Short-throw cocking lever



For more details go to  
[daystate.com/delta-wolf-accessories](http://daystate.com/delta-wolf-accessories)

## RECOMMENDED MAINTENANCE

Precharged pneumatic air rifles work at extremely high pressures and can be dangerous if not serviced correctly. All work should be carried out by a Daystate factory-trained gunsmith. Correct maintenance will ensure a long, trouble free life. Daystate recommends that the rifle be returned to the factory, or your Daystate-approved servicing agent, for routine maintenance every three years.

### CHRONO CLEANING

The chronograph unit fitted to your Alpha Wolf contains a clear plastic tube that should be internally cleaned at least every 500 shots to avoid missed readings caused by lead dust. Use a pistol cleaning rod with flannelette or a soft barrel mop, lightly soaked with a non-abrasive cleaner (fig.26). Internal diameter of the tube is 9mm. Avoid using pellet lubricant that can cause lead dust to stick to the inside of the chrono tube.



### BARREL CLEANING

For optimum performance, the barrel should be periodically cleaned with a barrel cleaning solution recommended for air rifles. Daystate recommends the use of cleaning pellets or soft brush. A wire brush must not be used on the Alpha Wolf as it may damage the chronograph module. The barrel shroud and chronograph assembly is made as a unit and should not be stripped down. The barrel can be cleaned on or off the rifle, see barrel removal in the chapter BARREL AND CALIBER CHANGE.

Frequency of cleaning depends on the pellet type and the individual barrel. For general guidance, the barrel should be cleaned in line with the cleaning of the chrono tube: at least every 500 shots.

### AIR RESERVOIR

The Alpha Wolf's buddy-bottle will withstand pressures many times the working pressure of the air rifle. The air buddy bottle should be inspected and replaced every 10 years.

### ACTION

To keep the rifle clean, a suitable gun cleaner or oil can be applied to a cloth and used to wipe over the outside of the gun. DO NOT allow oil to enter into the inlet valve or electronics areas.

### STOCK

A furniture polish is recommended for laminate and Safari textured finish stocks.

### LUBRICATION

Periodically, the bolt shaft and sidelever pivots should be sparingly lubricated with light grease or oil. Do not lubricate any of the internal parts such as the firing valve or solenoid/hammer assembly. The snap-on filling connector is factory-lubricated with a special non-combustible grease. The connector can be maintained by wiping over with oil or grease but should be left dry.

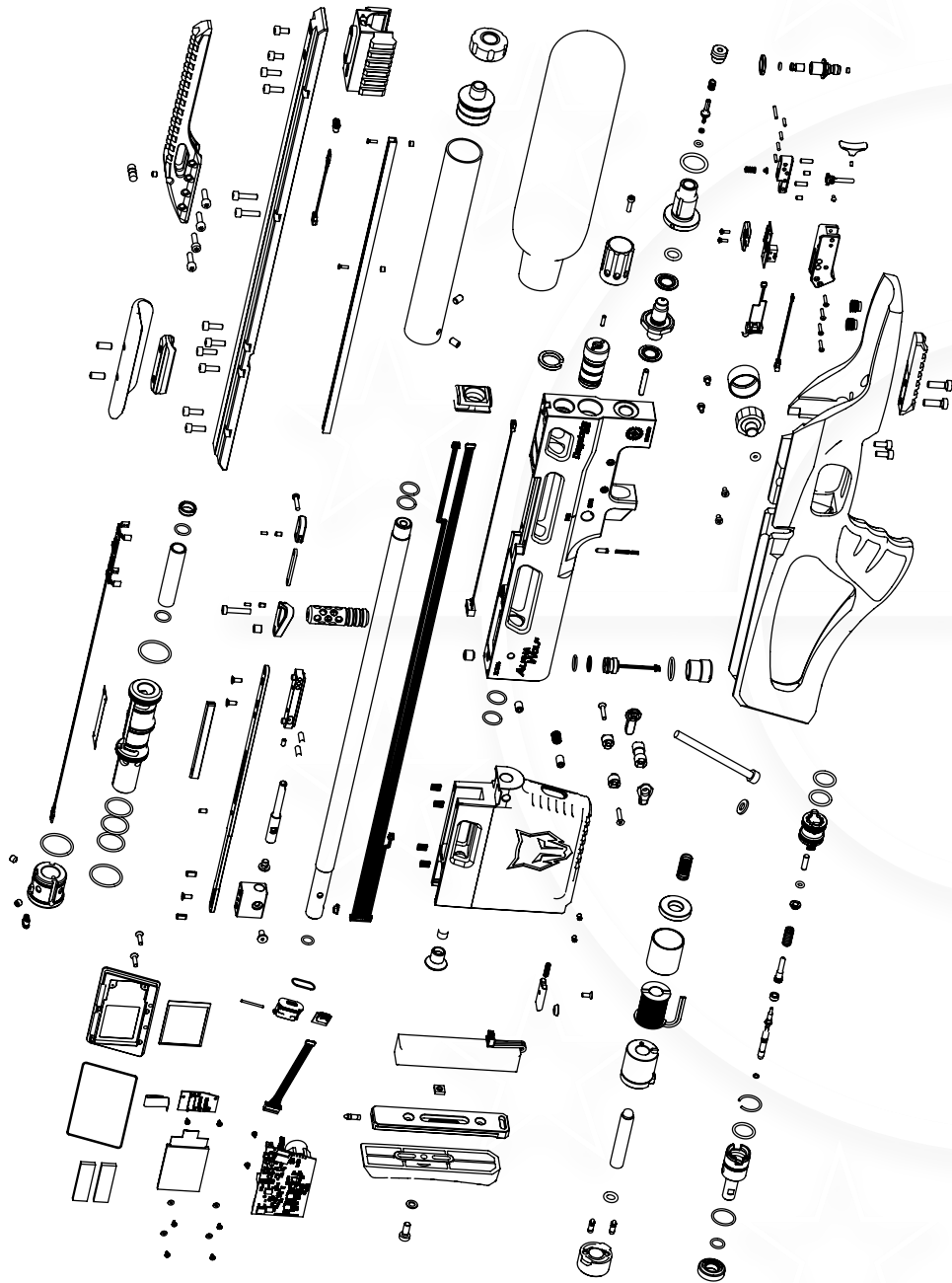
### USE OF MANUAL PUMPS

This type of charger offers an inexpensive and convenient method of charging your rifle. If you regularly use this type of charger, care should be taken to avoid condensation build-up from inside the pump being transferred to the buddy-bottle. Always refer to the pump manufacturer's operating instructions.

### MORE INFORMATION

More servicing information can be found online at  
<https://daystate.com/support/>

## ALPHA WOLF



## YOUR DAYSTATE WARRANTY

### 3 YEAR WARRANTY

All new Daystate rifles are guaranteed against faulty parts and labour for a period of three years from date of purchase (proof of purchase required). After this period, it is recommended that the rifle be returned to Daystate or its authorised agent for a scheduled service, and every three years subsequently. Servicing is charged at current rates. The warranty applies to the first purchase of a new rifle and is not transferable. Register your warranty online at:

[daystate.com/warranty](https://www.daystate.com/warranty)

### EXCLUDED FROM WARRANTY

Failure due to misuse or abuse, the fitting of non-standard parts, springs, seals, water-damage, batteries and fair wear and tear. Daystate Ltd or its approved agent must carry out all maintenance and warranty work. The rifle must be maintained and used as outlined in this Instruction Manual.

Should a rifle be returned or collected under warranty, Daystate or its approved agent reserve the right to charge for postage and inspection costs.

A return form, which should be included with the rifle, can be downloaded here: [daystate.com/images/reviews/RifleReturnForm.pdf](https://www.daystate.com/images/reviews/RifleReturnForm.pdf)

Ensure that the rifle is securely packed. Where possible, please remove the scope and other accessories to avoid the possibility of transit damage.

While every effort is taken to ensure the accuracy of the information in this instruction manual, Daystate Ltd or its agents cannot be held responsible for errors or omissions. Products are continually updated, and specification may change without notice.



### OFFICIAL DAYSTATE OWNERS' CLUB

<https://www.facebook.com/groups/DaystateOwnersGroup>



**Daystate**



**DAYSTATE LTD.**

Unit 3 | Raleigh Hall Industrial Estate | Eccleshall | Staffordshire | ST21 6JL | UK | [office@daystate.com](mailto:office@daystate.com)

**[daystate.com](http://daystate.com)**

©Daystate Ltd. 2022.v1. E&OE.