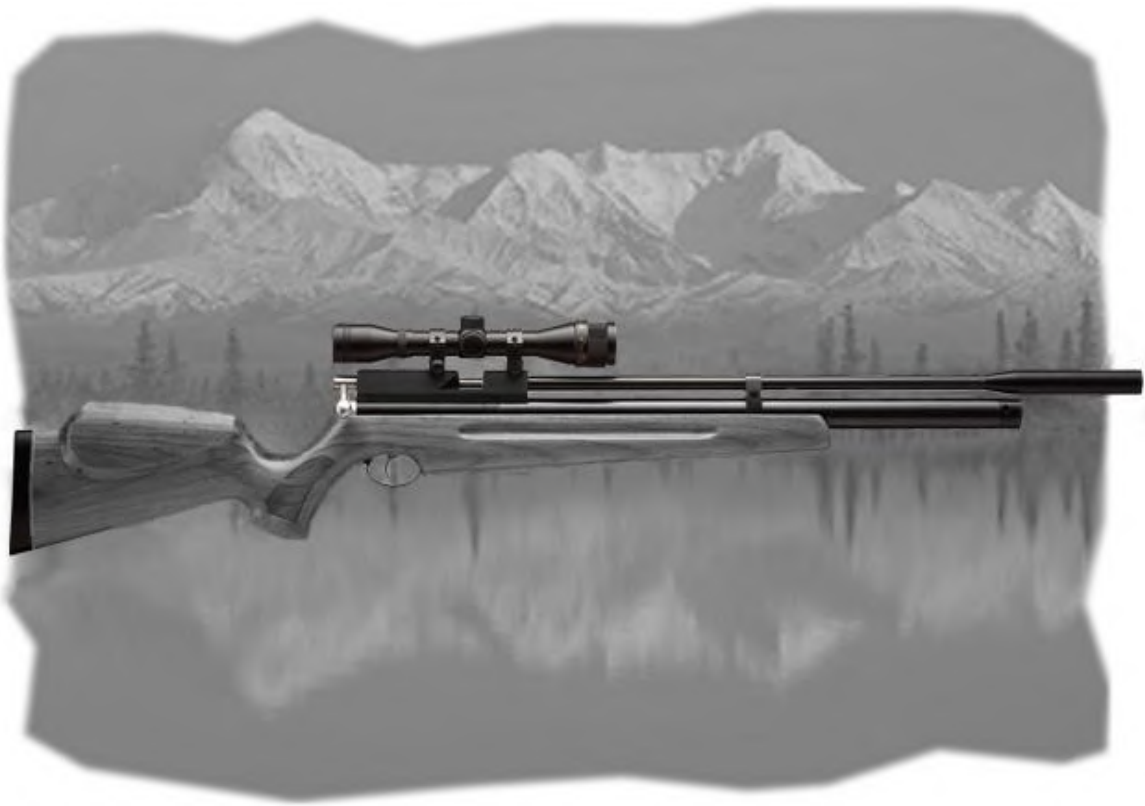


OPERATING MANUAL

Models M10/M11/M20/M22

Pre-charge Pneumatic Air Rifle



Thank you for choosing M10/M11/M20/M22 PCP air rifle.

Please read this manual completely before handling or shooting your air rifle. Always use caution when operating this rifle. It's the sole responsibility to use this rifle properly and safely. Learn and obey the laws of your country, and be responsible in your use of this air rifle.

⚠ WARNING: Not a toy. This air rifle is recommended for adult use only. Misuse or careless use may cause serious injury or death.

⚠ WARNING: Do not brandish or display this air rifle in public --- it may confuse police and others thinking it is a firearm. Do not change the coloration and markings to make it look more like a firearm. That is dangerous and may be crime.

⚠ WARNING: WHATEVER THE CONDITION IS, NEVER POINT THIS AIR RIFLE AT ANYONE EVER.

⚠ WARNING: Lead pellets. Do not inhale dust or put pellets in mouth. Wash hands after handling. This product contains lead, a chemical known to public to cause cancer and birth defects (or other productive harm).

⚠ WARNING: Use only compressed air in this air rifle. Use no other gasses --- including oxygen, which can cause a fire or explosion that may result in serious injury or death.

⚠ WARNING: This air rifle could fire when dropped or jarred, with or without the safety engaged.

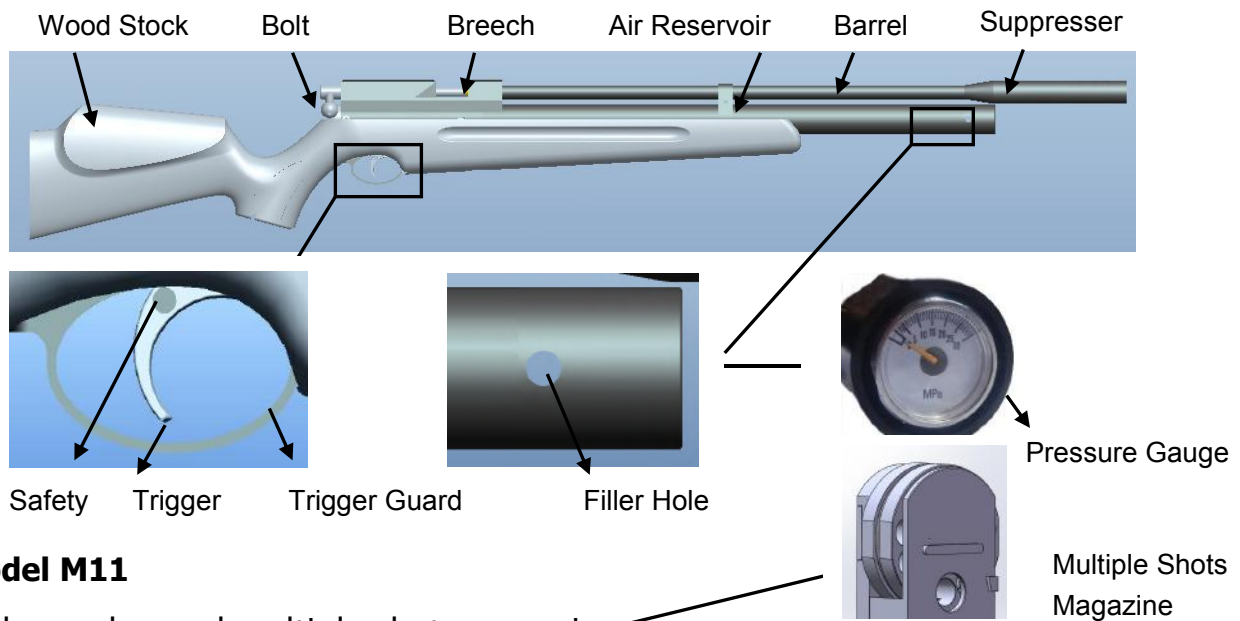
Before using your new air rifle check if it is fully charged and abide the below basic safety rules:

1. Treat every rifle as if it is loaded.
2. Never point the rifle at anyone, or allow anyone to point a rifle at you, even if you know it is not loaded.
3. Always carry the rifle so that the muzzle direction is under control, even if you stumble.
4. Always be sure of your target and what lies behind it before firing your rifle.
5. Never leave a loaded rifle unattended.
6. Beware of targets that tend to cause ricochets.
7. It is recommended that eye & ear protection is worn when charging the cylinder and when shooting.

Please read this owner's manual completely. And remember that an air rifle is not a toy. Always carefully follow the safety instructions in this manual and keep this manual in a safe place for future use.

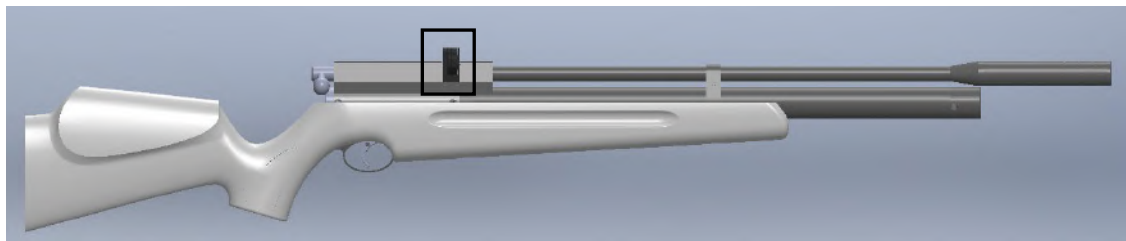
Section I. PARTS INTRODUCTION OF YOUR NEW AIR RIFLE

Basic Model M10



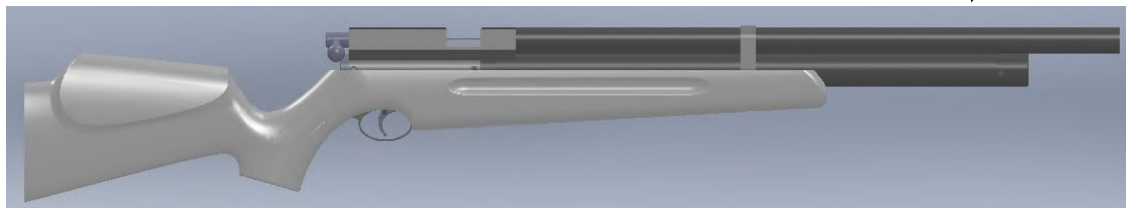
Model M11

With an advanced multiple shots magazine



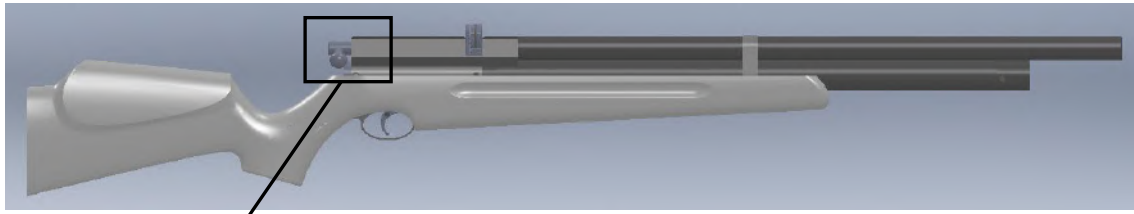
Model M20

With an integrated suppresser, which gives a greater silencing effect.

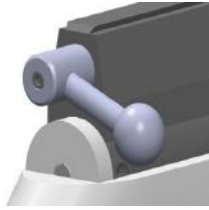


Model M22

With an integrated suppresser, a multiple shots magazine, an advanced consistent valve and some regulated parts, which gives greater silencing effect, more stable velocity for each shot, and it satisfies more velocity specs for different customers without adding or removing other parts.



Regulated Parts



Section II. SPECIFICATIONS

Model	M10	M11	M20	M22
Barrel	Rifled barrel• Length 535mm	Rifled barrel• Length 535mm	Rifled barrel• Length 535mm	Rifled barrel• Length 535mm
Caliber	.177(4.5)/ .22(5.5)/ .25(6.35)	.177(4.5)/ .22(5.5)	.177(4.5)/ .22(5.5)/ .25(6.35)	.177(4.5)/ .22(5.5)
Velocity	Cal. 4.5 1000fps; Cal. 5.5 1000fps; Ca.l 6.35 900fps	Cal. 4.5 1000fps; Ca.l 5.5 1000fps	Cal. 4.5 1000fps; Cal. 5.5 1000fps; Cal. 6.35 900fps	Default settings Cal. 4.5 1000fps; Cal. 5.5 1000fps; Adjustable velocity 500~1000fps
Trigger pull	Adjustable trigger, 0.5-5Lbf	Adjustable trigger, 0.5-5Lbf	Adjustable trigger, 0.5-5Lbf	Adjustable trigger, 0.5-5Lbf
Safety	Adjustable, manual safety, ON 1~6 Lbf / OFF 1~6 Lbf	Adjustable, manual safety, ON 1~6 Lbf / OFF 1~6 Lbf	Adjustable, manual safety, ON 1~6 Lbf / OFF 1~6 Lbf	Adjustable, manual safety, ON 1~6 Lbf / OFF 1~6 Lbf
Max. Fill Pressure	20MPa/ 200Bar 25MPa/ 250Bar with consistent valve	20MPa/ 200Bar 25MPa/ 250Bar with consistent valve	20MPa/ 200Bar 25MPa/ 250Bar with consistent valve	25MPa/ 250Bar
Capability	250cc	250cc	250cc	250cc
Consistent Valve	Default NO, optional	Default NO, optional	Default NO, optional	Yes
Magazine type	NO	.22 (5.5)•11 pellets .177(4.5) •13 pellets	NO	.22 (5.5)•11 pellets .177(4.5) •13 pellets
Suppresser	Split suppresser	Split suppresser	Integrated suppresser	Integrated suppresser
Regulated Parts	Default NO, better choose with consistent valve	Default NO, better choose with consistent valve	Default NO, better choose with consistent valve	Yes
Scope	11mm devotail	11mm devotail	11mm devotail	11mm devotail
Stock	Import Beech	Import Beech	Import Beech	Import Beech
Exterior size	1170*48*60(mm)	1170*48*60(mm)	1240*48*60(mm)	1240*48*60(mm)
Net weight	3.0kg	3.0kg	3.5kg	3.5kg
Extras	Quick fill nozzle, vulnerable O-rings, owner's manual	Quick fill nozzle, vulnerable O-rings, owner's manual	Quick fill nozzle, vulnerable O-rings, owner's manual	Quick fill nozzle, vulnerable O-rings, owner's manual

Your air rifle contains features as below:

- ❖ High shooting accuracy
- ❖ Great power
- ❖ Economic gas capacity and high usage rate

- ❖ Simple structure, easy handling and good stability
- ❖ Safe and reliable
- ❖ Exquisite workmanship and excellent appearance

Section III OPERATING INSTRUCTION

1. MANUAL SAFETY

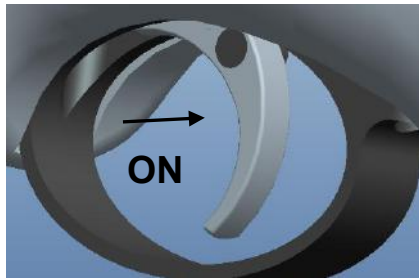


Fig 1

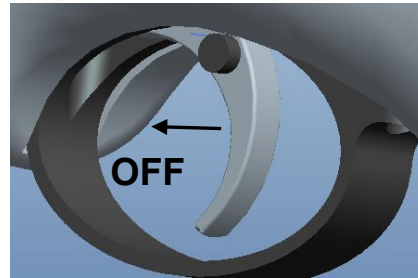


Fig 2

- ❖ Safety button can be set to “ON” and “OFF”
- ❖ To set the safety to “ON”, push in the safety, see the arrow direction in Fig 1. In this position, the gun cannot be fired.
- ❖ To set the safety to “OFF”, push out the safety, see the arrow direction in Fig 2. In this position, the gun is ready to shoot.

CAUTION: Until you are actually ready to fire, keep the safety in “ON” position for safety concern.

2. CHARGING THE RIFLE

Fit the filler nozzle to the air-line of the charging equipment, which must incorporate a pressure gauge. Ensure both filler nozzle and the rifle filler are clean from dirt, then push the nozzle into the filler hole (the basic part No.7 in Fig 1). We recommend you fill 19MPa pressure to the air reservoir. Do not exceed the maximum pressure 20 MPa. The rifle can be charged to maximum 25MPa with consistent valve.



Step 1



Step 2

2.1 Pressuring (Filling) the Air Rifle with a Hand Pump

- ❖ Be sure to wear eye protection.
- ❖ Make sure the air rifle is unloaded and not cocked.
- ❖ Read all instructions with your hand pump so you are familiar with its operation.
- ❖ Put the air rifle ‘ON SAFE” (see Fig 2)
- ❖ Point the air rifle in a SAFE DIRECTION.
- ❖ Follow the Step 1 and Step 2, now you are ready to fill pressure.

2.2 Pressuring (Filling) the Air Rifle with a High Pressure Tank

- ❖ Follow the Step 1 to fit the filler nozzle.
- ❖ Then follow Step 2 to fill.
- ❖ Slowly open the valve on your tank and start filling the air rifle SLOWLY. Filling too quick will cause heat buildup that can affect the accuracy of the fill pressure.
- ❖ Watch the gauge on your air rifle and the air reservoir until the reasonable pressure is reached.
- ❖ DO NOT fill the air rifle to more than 20MPa/25MPa with consistent valve.
- ❖ Turn the valve on your tank off when the reasonable pressure is reached.
- ❖ BLEED the fill hose COMPLETELY to avoid hose whip and possible injury.
- ❖ Disconnect the tank’s fill hose from the filler nozzle on the air rifle.

2.3 Depressurizing the Air Rifle

Your M10 air rifle, like most PCP air rifles, is best stored with some pressure in the reservoir. This keeps the seals in the air rifle forced against the sealing surface and saves some air for next time fill or use. In the event you want or need to depressurize the air rifle follow the following steps:

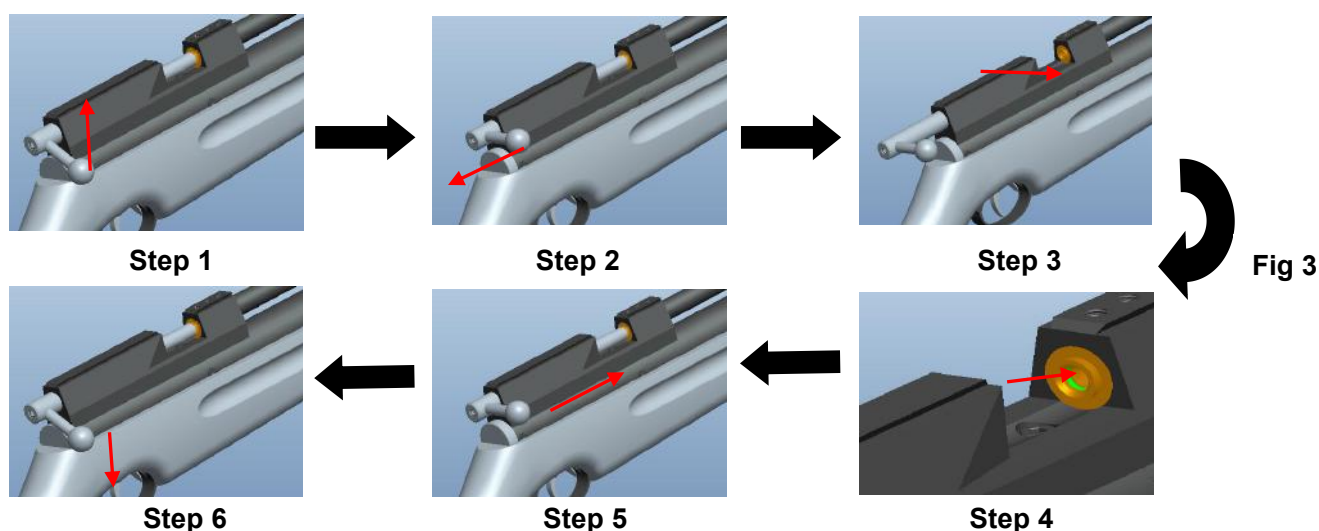
- ❖ Using the dry fire method.
- ❖ Keep the air rifle pointed in a SAFE DIRECTION.
- ❖ Remove all the air from the air rifle by repeatedly cocking and dry-firing with the air rifle pointed in a SAFE DIRECTION until the pressure gauge on your air rifle shows no pressure and air cannot be heard when the shot is fired.
- ❖ Put the air rifle "ON SAFE".

Filling Notes:

- * Before you remove the filler nozzle from the filler hole, turn on the exhaust valve on your filling equipment and make sure the hose has already exhausted. Then turn off the exhaust valve.
- ** The air reservoir on your M10 air rifle is not replaceable. DO NOT INTEND TO DISMANTLE ANY PARTS ON YOUR AIR RIFLE IN ANY SITUATION.
- *** If your air rifle is being filled from completely empty(zero pressure) the tension of the hammer pressing against the valve may keep the valve open which will cause air to leak down the barrel. In the event this occurs try cocking the bolt and leaving it in the rear (fully open) position to eliminate the force on the valve allowing it to close. Always make certain the air rifle is not loaded and there is not a pellet in the chamber with the safety "ON".

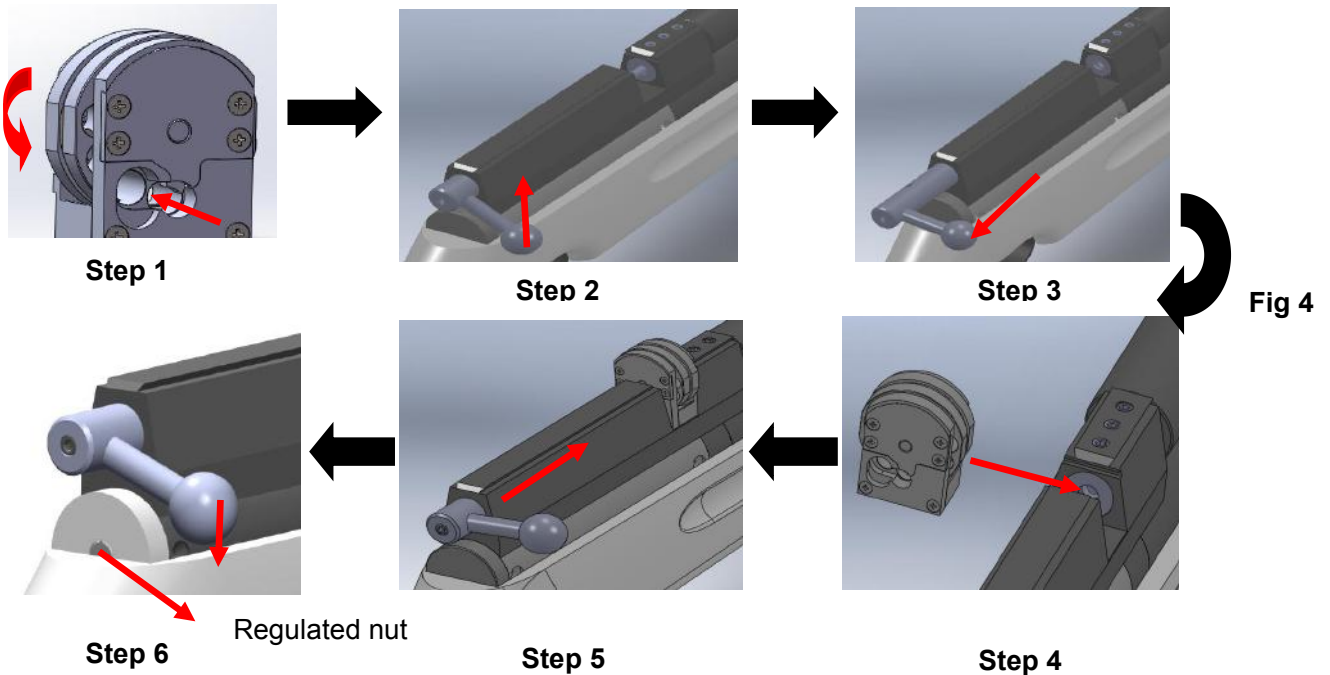
3. LOADING PELLETS

- ❖ When you are holding the air rifle, make sure it is not cocked and unloaded and check if you take the same caliber pellet as your barrel.
- ❖ Check the air pressure in your gas cylinder is in a reasonable range.
- ❖ DO NOT POINT THE MUZZLE AT ANYONE when loading.
- ❖ Before loading, check if the safety is "ON".
- ❖ The followings are the loading procedures for **M10/M20**:



When you are holding the air rifle, check your air rifle is set like Step 1. Turn the bolt up then pull it to the rear position until the air rifle is cocked. (The bolt cannot automatically return forward.) Now the loading port can be seen like Step 3. Load the pellet from the loading port. Push the bolt forward to the end. Turn the bolt down like Step 6.

- ❖ The followings are the loading procedures for **M11/M22**:



Before assembling the magazine, load pellets into magazine hole and make sure it's centered like Step 1 in Fig 4. Turn the magazine each time in the arrow direction after loading a pellet until all the holes are loaded with pellets. When you are holding the air rifle, check your air rifle is set like Step 2. Turn the bolt up then pull it to the rear position until the air rifle is cocked (The bolt cannot automatically return forward). Align the magazine bugle into breech slot and assemble the magazine. Push the bolt forward and lock it like Step 5&6. After shooting out all 11 pellets, pull the bolt to the end, dismantle the magazine and reload.

The followings are velocity regulating procedure:

Turn in the regulated nut in Step 6 to increase velocity, while turn it out to reduce.

* Hold the air rifle stably when loading. DO NOT SHAKE OR DROP THE AIR RIFLE.

** KEEP YOU FINGER AWAY FROM TRIGGER when loading and turn "ON" safety.

*** After loading, return the bolt to its original position like Step 6.

4. FIRING

- ❖ Always point your air rifle in a SAFE DIRECTION.
- ❖ Follow the instructions for loading pellets (Fig 4)
- ❖ You and others with you should always wear shooting glasses to protect your eyes.
- ❖ Do not shoot at hard surfaces or at the surface of water. The pellet may bounce off or ricochet and hit someone or something you had not intended to hit.
- ❖ Always choose your target carefully. It is best to shoot at paper bull's-eye targets which are attached to a safe backstop. A heavy blanket should be hung behind the backstop to prevent ricochet should you miss the backstop.
- ❖ Your air rifle is suitable for both indoor and outdoor use. Please aim your target carefully. THINK about what you will hit if you miss the target.

Section IV. MAINTENANCE

⚠ WARNING: Never shoot the air rifle when the air reservoir is empty. Failure to obey this instruction could result in damage to your air rifle. Never lubricate inside the barrel as this may affect the shooting accuracy and firing intensity in negative manner.

Lubricating and Cleaning

Every 3 months or 1000 shots apply mineral based oils sparingly to the following parts:

- ❖ The surface of bolt
- ❖ The seal of loading port

It is recommended to clean the barrel with a cleaning rod every 3 months or every 1000 shots. Never lubricate inside the barrel.

Before you begin oiling or cleaning your air rifle, always check to make sure it is unloaded.

Always be sure your air rifle barrel is clean and not blocked.

After cleaning ensure that no cleaning patch or other obstruction remains in the barrel.

Annually, take your air rifle to a gunsmith even if it seems to be working well, since some issues in your air rifle may not be apparent from external examination.

Take your air gun to a gunsmith if water, sand, etc. enters the internal mechanism of the air gun, for complete cleaning.

Dangerous conditions may occur if you do not keep your air gun clean and working properly.

Quick Fill Nozzle O-Ring Replacement

After a period of time, the O-ring on the fill nozzle will need to be replaced. The need for this will become noticeable if air is heard leaking from the nozzle or the nozzle ejected from the rifle while charging the rifle. Always ensure to replace both O-rings.

Intake Valve O-Ring Replacement

After a period of time, the O-ring on the fill nozzle will need to be replaced. Once air is heard leaking from the intake valve, it is the sign of immediate replacement of the intake valve O-ring.

- ❖ Make sure there's no high pressures air in the air reservoir, and wait until the gauge needle points to zero.
- ❖ Follow the following steps to replace the O-ring:
 - Firstly, dismantle the intake valve.
 - Secondly, remove the intake valve screw and the used O-ring.
 - Then replace the new O-ring onto it.
 - At last, Re-assemble the intake valve.
- ❖ Make sure all the threads are screwed in during the assembly.
- ❖ It is recommended to seek a competent gunsmith for help to replace the O-ring. If you need to replace it yourself, make sure there's no high pressure in the air reservoir and the gauge needle has pointed to zero.

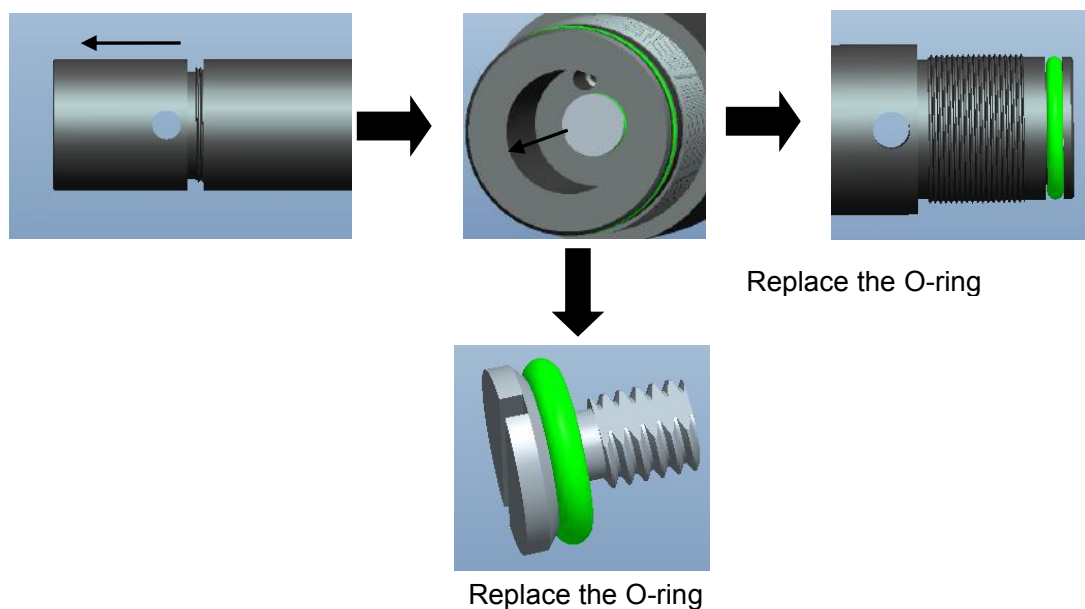
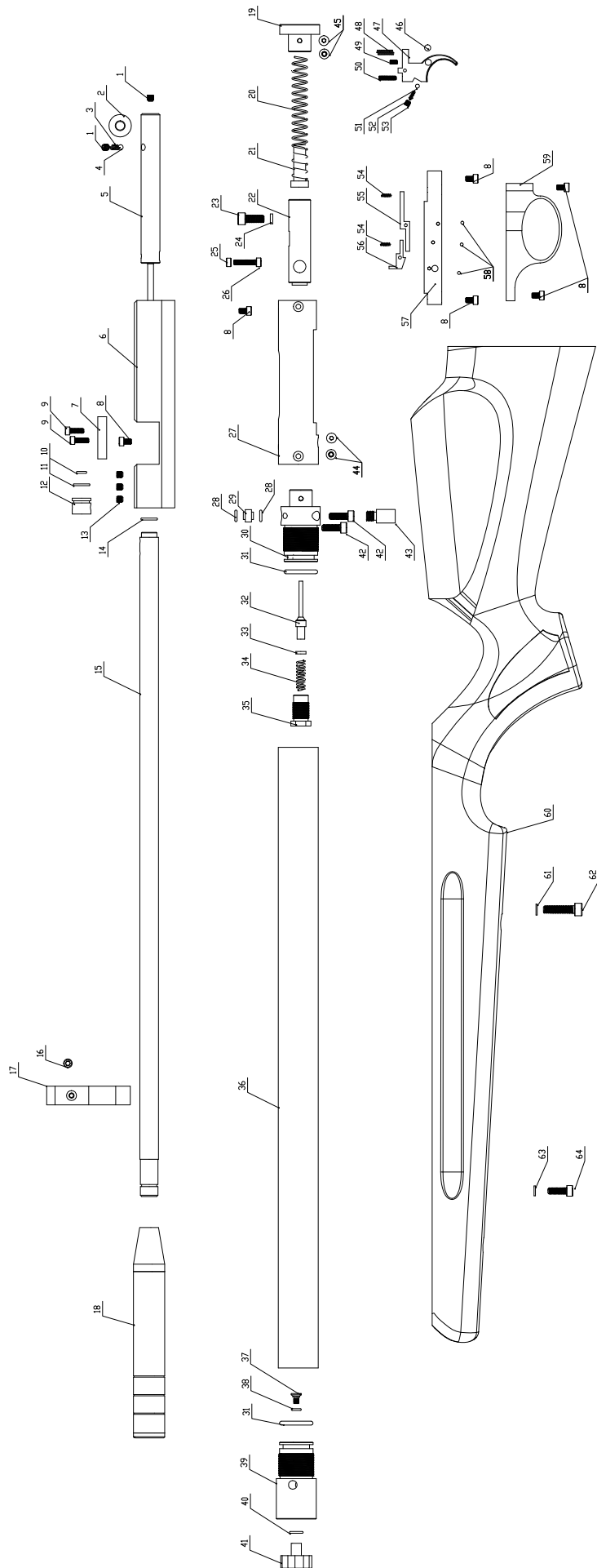


Fig 5

Section V. COMMON ISSUES AND SOLUTIONS

NO.	Issues	Solutions
1	Leakage at filler nozzle when charging	Replace the filler O-ring
2	Air coming out from barrel when charging	A. Cock the gun first then charge B. Exhaust valve: change exhaust valve core
3	Leakage at filler hole after charging	Replace intake valve O-ring
4	Leakage at mount place of exhaust/ intake valve and air reservoir	Replace valve body O-ring
5	Leakage at pressure gauge when charging	Replace pressure gauge O-ring
6	Grouping going bad suddenly	Barrel fixing screws or reservoir mount screws become loose and need to be re-tightened.
7	Bolt can't be fixed.	Bolt screws become loose and need to be re-tightened.
8	Bolt can't be turned to the end.	Bolt screws become loose and need to be re-tightened.
9	Leakage at loading port when firing	Replace breech O-ring
10	Feeling heavy to pull the bolt	Dismantle breech, clean around bolt probe and add lubricating oil on bolt probe.



NO	Part Name	Qty	NO	Part Name	Qty	NO	Part Name	Qty	NO	Part Name	Qty	NO	Part Name	Qty	NO	Part Name	Qty						
1	Bolt Screw	2	9	Breach Insert Block Screw	2	17	Barrel Reservoir Mount	1	25	Breach Probe Screw Bushing	1	33	Exhaust Valve Spring Bushing	1	41	Pressure Gauge	1	49	Trigger Screw	1	57	Trigger Base	1
2	Bolt	1	10	Breach O-Ring	1	18	Suppressor Assembly	1	26	Breach Probe Screw	1	34	Exhaust Valve Spring	1	42	Breach Lower Screw	2	50	Sear Bracket Screw	1	58	Trigger Pin	2
3	Breach Probe Detent Spring	1	11	Loading Port Brass Sleeve O-Ring	1	19	Piston Stroud Cover	1	27	Piston Stroud	1	35	Exhaust Valve Screw Nut	1	43	Wood Stock Screw Nut	1	51	Safety Detent Ball	1	59	Trigger Guard	1
4	M4 Detent Ball	1	12	Loading Port Brass Sleeve	1	20	Piston Spring	1	28	Exhaust Valve Connector O-Ring	1	36	Air Reservoir	1	44	Valve Body Screw	2	52	Safety Spring	1	60	Wood Stock	1
5	Breach Probe	1	13	Barrel Fronting Screw	3	21	Hammer	1	29	Exhaust Valve Connector	1	37	Intake Valve Screw	1	45	Piston Stroud Cover Screw	2	53	Safety Spring	1	61	Wood Stock Screw Washer	1
6	Breach	1	14	Barrel O-Ring	1	22	Piston	1	30	Exhaust Valve	1	38	Intake Valve O-Ring	1	46	Safety	1	54	Trigger Spring A	1	62	Wood Stock Screw	1
7	Breach Insert Block	1	15	Barrel	1	23	Piston Screw	1	31	Valve Body O-Ring	1	39	Intake Valve	1	47	Trigger Spring B	1	55	Sear Bracket	1	63	Mount Lower Screw Washer	1
8	Breach Upper Screw	6	16	Reservoir Mount Side Screw	1	24	Piston Screw Bushing	1	32	Exhaust Valve Core Assembly	1	40	Pressure Gauge O-Ring	1	48	Trigger Spring B	1	56	Sear	1	64	Reservoir Mount Lower Screw	1

SAFETY MEASURES & WARNINGS

- ❖ This air gun will shoot if cocked, loaded, safety disengaged and trigger pulled.
- ❖ Air guns are not toys. Never let young children use an air gun unsupervised. Adult supervision is strictly required during use. Misuse or careless use may cause serious injury or death.
- ❖ Learn how your air gun operates and safe air gun handling procedures before loading and using it.
- ❖ **ALWAYS USE EYE & HEARING PROTECTION AND MAKE BYSTANDERS USE THE SAME.**
Failure to do so may result in eye injuries and permanent hearing loss.
- ❖ Do not point at anything you do not intend to shoot even though the air gun is unloaded. Always keep the air gun pointed in a safe direction.
- ❖ Never pull an air gun toward you by the muzzle.
- ❖ Always aim at a safe target, taking care that it does not conceal any other object.
- ❖ Before you shoot, consider where the pellet will travel should you miss your intended target, thus ensuring no damage or harm could result. Be sure of your target before you pull the trigger. Never shoot at sounds.
- ❖ When shooting, always have a safe shooting range, that is; have a safe area for shooting, a safe distance between you and the target, and a safe backstop to trap the pellets and hold the target.
- ❖ Do not shoot at a target, which allows ricochets or deflections. Do not shoot into or at water.
- ❖ Do not shoot at or near power lines or insulators. Be especially careful in wooded areas where power lines may not be as visible.
- ❖ Do not load the air gun until you are ready to shoot.
- ❖ Always keep your fingers away from the trigger & muzzle during cocking and handling.
- ❖ Do not run or jump when carrying a loaded or cocked air gun. A loaded or a cocked air gun should never be carried inside a vehicle, house, camp or public place. Never climb a tree or fence or jump a ditch with a loaded air gun. In such a case, first unload it and hand the air gun to a friend or place it on the ground on the other side of the obstacle before crossing yourself.
- ❖ When transporting the air gun, keep it unloaded and "ON SAFE".
- ❖ Always keep the air gun "on safe" until you are ready to shoot even if the air gun is unloaded.
- ❖ Do not put the air gun away loaded and unattended.
- ❖ Always check to see if the air gun is 'on safe' and unloaded when getting it from another person or from storage.
- ❖ Always keep the air gun and/or pellets out of the reach of children. Keep the air gun and pellets in separate places, better if under lock and key.
- ❖ Do not attempt to disassemble or tamper with your air gun. Use a competent gunsmith. Many air guns contain powerful springs or high pressure air cylinders which can cause serious injury if released in an uncontrolled manner.
- ❖ Always handle and treat your air gun as though it were loaded.
- ❖ Improper use or handling of air guns is not the responsibility of the manufacturer or distributor, under any circumstances. The user is responsible for any harm, which may be caused.
- ❖ Think first, shoot second. Don't rely on any mechanical safety. Half safe is not safe.
- ❖ Be safe not sorry. Respect other's property.
- ❖ Air guns should never be used under the influences of alcohol or drugs.