



INSTRUCTION MANUAL  
MANUAL DE INSTRUCCIONES  
NÁVOD NA POUŽITÍ  
BEDIENUNGSANLEITUNG  
MODE D'EMPLOI

---

**CZ 512**

**Before handling the firearm read this manual carefully and observe the following safety instructions.**

Improper and careless handling of the firearm could result in accidental discharge and cause injury, death or damage to property. The same repercussions can be caused by unauthorized modifications or adjustments, corrosion, or use of non-standard or damaged ammunition. In these cases the manufacturer shall not be held responsible in any manner whatsoever for the resulting consequences.

Before leaving the factory the firearm was tested, inspected and packaged in accordance with company policy. Ceska zbrojovka a.s. cannot accept responsibility for product handling whilst in transit after dispatch from the factory. Therefore, examine the firearm carefully upon receipt to ensure that it is unloaded and undamaged.

This instruction manual should always accompany the firearm in the event of loan or further sale.

## CONTENTS

SAFETY INSTRUCTIONS	2	MAINTENANCE INSTRUCTIONS	7
RIFLE DESCRIPTION AND TERMINOLOGY	3	Stripping for Cleaning	7
OPERATING INSTRUCTIONS	5	Cleaning the Rifle	8
Ammunition	5	Cleaning the Barrel and the Chamber	8
Removing the Magazine	5	Cleaning of Other Parts	9
Loading the Magazine	5	Preserving of the Rifle	9
Loading the Rifle	5	Waste Management	9
Unloading the Rifle	6	LIST OF PARTS	10
The Safety and its Operation	6	TROUBLESHOOTING	11
Sight Adjustment	6	TECHNICAL SPECIFICATIONS	12
Rifle Scope	7	LIST OF ILLUSTRATIONS	13

**SAFETY INSTRUCTIONS**

Always follow the safety instructions for your safety and the safety of others.

1. Always handle your firearm as if it were loaded.
2. Never point the firearm at anything you do not intend to shoot at. Also never point a firearm at anybody even in fun.
3. Never take anyone's word that the firearm is unloaded.
4. Always make sure that the firearm is not loaded before laying it down or handing it over to another person.
5. Always store the firearm unloaded with the striking mechanism released.
6. Never abuse the firearm by using it for any purposes other than shooting.
7. Never leave a firearm unattended.
8. Prior to loading the firearm ensure the barrel, chamber and action are clean and clear of obstructions. If the firearm becomes excessively dirty during firing clean it immediately. Always clean the firearm after use.
9. Do not shoot the firearm, unless you are certain about the ammunition you are using. Do not use unmarked or hand-loaded ammunition from an unknown source, ammunition with a cracked, deformed or dented case or with a damaged bullet. Reloading is an expert activity and incorrectly reloaded ammunition may be extremely dangerous. It may result in heavy damage or destruction of the firearm and serious injury or death of the shooter or other persons. Always use clean and dry original high quality commercially manufactured ammunition, which corresponds to the caliber of the firearm.
10. Never drink alcohol or take drugs before and during shooting.
11. Whenever practical always wear safety glasses and ear protection while shooting.
12. Always keep the safety applied when the rifle is loaded with cartridge in the chamber, until you are ready to fire. Keep firearm pointed in a safe direction when disengaging the safety.
13. Always keep the ejection port clear of obstructions and people.
14. Never pull the trigger or put your finger within the trigger guard unless you are aiming at a target and ready to fire.

15. Always make absolutely sure of your target and the area behind it before pulling the trigger. The bullet can pass through or past the target up to several hundred meters.
16. Never shoot at a hard surface such as rock, or a liquid surface such as water.
17. Never fire near an animal unless it is trained to withstand the noise.
18. Never indulge in "horseplay" while holding the firearm.
19. Failure to fire: In case it fails to fire, hold the firearm keeping it pointed in a safe direction and wait 30 seconds. If a hangfire (slow ignition) has occurred, the cartridge will fire within 30 seconds. If the cartridge does not fire, eject the cartridge and examine it. If the firing pin indent on the cartridge is light, or non-existent, have the firearm examined by a competent gunsmith.
20. Always make sure your firearm is not loaded before cleaning, storing or travelling. Remove any unused ammunition from the firearm and store it in compliance with the law.
21. Always keep and store your firearm and ammunition in separate secure locations out of reach and sight of children and unauthorized persons. Always protect the ammunition from sources of heat and open fire.
22. Never alter any parts of your firearm; the safety and proper function of your firearm could be seriously affected.
23. Always be aware that corrosion, use of damaged ammunition, dropping the firearm on hard surfaces or other "rough treatment" can cause damage that is not necessarily obvious at first sight. If something like this happens, have the firearm examined and tested by a competent gunsmith.
24. Always hold the firearm safely while shooting and never grasp it by the magazine.

## RIFLE DESCRIPTION AND TERMINOLOGY

The designation of basic rifle parts used in this Instruction Manual are presented in Fig. 1 on the inner side of the cover. Nomenclatures of all CZ 512 parts are presented in the section *List of Parts*.

The CZ 512 rimfire model is a self-loading, blowback operated rifle, designed for hunting and sporting purposes. It features a manual safety to prevent any accidental discharge. The rifle can be provided with a scope attached to the rails on the receiver top.

The rifle is supplied in several basic models incorporating a semi-matt beech stock. The characteristics of the various models include:

- the rifle is well-balanced and consequently quick and easy to aim
- easy mounting of rifle scope
- controlling elements, which are simple in operation, and easy to reach
- easy stripping for cleaning and routine maintenance, which can be carried out without any tools
- high degree of accuracy when firing
- long service life
- high functional reliability in all environments, even with ammunitions made by various manufacturers, and with different types of bullets
- manually operated bolt lock (only in firearms with slide stop)

CZ 512	Description
Standard	design with a lacquered beech wood stock; the barrel is fitted with adjustable sights
Carbine	design with a lacquered beech wood stock, threaded barrel; flap visor
American	design with a lacquered beech wood stock, barrel without sights
Tactical	design with tactical longitudinally adjustable stock with a face-piece, threaded barrel without sights; enables mounting of tactical accessories on the Weaver rail

## OPERATING INSTRUCTIONS

### Ammunition

Always use ammunition in an allowable production design which is in compliance with standards applicable for ammunition manufacturers and is approved by the CIP (Permanent International Commission for Firearms Testing) or SAAMI (Sporting Arms and Ammunition Manufacturers' Institute Inc. of the United States). The use of other cartridges could damage the firearm or cause injury to the shooter. When using factory-made ammunition with standard speed, the use of firearms produced by Česká zbrojovka a.s. is safe. Check the ammunition you are going to use to make sure that it corresponds to the caliber of your firearm. Commercially produced ammunition is clearly marked with the caliber on the bottom or around the bottom of each cartridge case.

The basic model in .22 WMR calibre has been designed for standard performance ammunition with muzzle velocity higher than 550 m/s. Apart from the standard type of ammunition, the .22 LR model has been also designed for High Velocity (HV) and subsonic ammunition.

**Note:** It is recommended to treat the subsonic ammunition with steel casings with a little grease to ensure reliable functioning of the entire firing cycle. Do not pointlessly dry fire (without cartridges) the firearm so as to avoid damage to the edges of the cartridge chamber and decreasing service life of the firing pin!

### Removing the Magazine

Pull the magazine catch located in front of the magazine towards the rear (Fig. 2) and remove the magazine from the rifle.

### Loading the Magazine

With the open end uppermost, grasp the magazine in one hand. Place a cartridge on the magazine follower with the base just forward of the retaining lips. Press the cartridge down and back until it touches the rear edge of the magazine. Place the next cartridge on top of the previous cartridge and slide in as already described.

### Loading the Rifle

ALWAYS MAKE SURE THE RIFLE IS POINTED IN A SAFE DIRECTION WHEN LOADING!

Insert a loaded magazine into the rifle until it is secured by the magazine catch.

Use your left hand to grab the rifle by the fore-stock, press the rifle butt against your body and grab the cocking lever with your right hand. Pull the bolt to its rearmost position and release it (Fig. 3). Never try to slow the bolt down when it is moving forward! This movement results in a round being chambered with simultaneous cocking of the striking mechanism. The rifle is now ready to fire. If you do not intend to fire immediately ensure the firearm safety is engaged as described in the section *The Safety and its Operation*.

### Unloading the Rifle

ALWAYS MAKE SURE THE RIFLE IS POINTED IN A SAFE DIRECTION!

- Remove the magazine as previously described
- Pull the bolt to its rearmost position and make sure the chamber is empty
- Release the bolt
- Make sure the safety is disengaged in order to allow for trigger pull
- Depress the trigger (dry fire)

Note: In the case of the firearm being fitted with a slide stop and should the need arise to retain the slide in the rearmost position (while checking the chamber or removing a defect, etc.), you can use the bolt lock button which is located in the inner part of the trigger guard in front of the trigger (Fig. 4).

### The Safety and its Operation

The manual safety is located at the rear of trigger guard (Fig. 4). When disengaged the red part of the safety will protrude out of the trigger guard to indicate the rifle is ready to fire. Once engaged, the white protrusion of the safety will show. With the safety engaged, the firearm bolt cannot be operated and it is not possible to pull the trigger.

### Sight Adjustment

The CZ 512 rimfire rifle allows for rear sight adjustment in elevation and windage and front sight adjustment in elevation. The sights have been zeroed at a range of 50m in the factory.

For rear sight adjustment in elevation and windage, loosen the H (horizontal) and V (vertical) screws and move the rear sight blade. For front sight adjustment in elevation, move the front sight in the dovetail groove in the front sight base. The front sight is secured against movement by using a screw.

**Rifle Scope**

Mounting of the riflescope and sighting-in of the rifle should be entrusted to a qualified gunsmith's workshop.

**MAINTENANCE INSTRUCTIONS****Stripping for Cleaning**

1. Remove the magazine.
2. Loosen the screw in fore-stock and remove it, pull the fore-stock at the direction of fire to take it off the rifle.
3. Depress the barrel in order to unblock the body locking pin. Push the body locking pin sideways (e.g. by using the fore-stock screw or any other suitable item) and remove it (Fig. 5).
4. Use your left hand to grasp the barrel and, holding the butt stock with your right hand, pull the receiver (Fig. 6) away to remove it out along the rails, up to a position, where the receiver has been stopped by the cocking lever.
5. Remove the cocking lever from the rifle (Fig. 7) and complete the removal of receiver and barrel. When removing the receiver and the barrel, pay special attention to prevent the bolt from releasing out of the receiver and causing accidental injury, as the bolt is under permanent tension of the recoil spring (recoil springs).
6. Hold onto the bolt top firmly, push it slightly to the rear to overcome the pressure of recoil springs and tilt it upwards to allow for its complete removal (Fig. 8). The bolt shall be removed with care in order to avoid any injuries due to the recoil spring (recoil springs) being released.

No further disassembly is needed for routine maintenance.

**Note:**

In the CZ 512 Tactical is first unscrewed the last screw (Allen 1/8") from the upper Weaver and the front screw (Allen 1/8") from the lower side of the fore-end. Then the fore-end is moved forward and the pin connecting the upper and lower housing is pushed out. Subsequently it is necessary to follow the disassembling instructions in regard to cleaning. To adjust the height of the face-piece use the Allen 5/64". The muzzle is equipped with a 1/2"x28 thread for accessories.



For the version with two recoil springs use the guide fork when reinstalling the springs (it is supplied only with the bolt of caliber .22 LR), which ensures an accurate and simple lead of the springs into the holes in the bolt (Fig. 9).

**CAUTION:**

Do not strip your firearm any further. If you assume that your firearm requires adjustment or repair, entrust this work to a competent gunsmith in a specialized workshop!

**Cleaning the Rifle**

Clean the rifle

- after every use
- if it gets wet
- immediately after shooting
- at least once a year in a temperate climates
- as often as once a month in tropical or extreme climates, or other demanding environments

**Cleaning the Barrel and the Chamber**

If the firearm has not been fired or if only a few cartridges have been fired clean the barrel and the chamber with a clean patch attached to the cleaning rod. Repeat the cleaning, changing patches, until the last patch comes out clean.

If the barrel is very dirty, apply a gun cleaning solution with the aid of a cleaning brush. Let the solvent act for about 10 minutes (this time may vary depending on the solvent agent being used). Then scrub out the barrel thoroughly. Subsequently, dry the barrel and the chamber with a clean patch and check that all powder residue, or fouling have been removed. If necessary repeat this procedure. The cleaning rod and the brush must be inserted into the barrel from the chamber, to prevent wear or damage to the muzzle. Pull the brush all the way through the barrel before reversing the movement. If you tried to change the direction of pulling, the brush would get stuck in the barrel.

**Cleaning of Other Parts**

The other metal parts of the rifle can be cleaned with a dry cloth, old toothbrush, copper bristle brush or a wooden scraper. Preserving oil or paraffin oil can be used for proper cleaning. Never use the agent designed for barrel cleaning! These solutions could remain in the joints causing corrosion after some time. Check that cloth particles or brush bristles have not lodged in any part of the rifle. The maintenance of the stock can be carried out with a dry cloth or by some furniture-polishing product.

**Preserving of the Rifle**

When the barrel, the chamber and all accessible parts are clean and dry, wipe these parts with a cloth soaked in gun oil or apply an oil in a spray form. In order to ensure a correct operation of the rifle it is necessary to apply the oil onto the lubrication surfaces of the bolt which are located at the rear part of the feeding bridge and on the top of the place above the recoil spring opening(s).

Furthermore, it is necessary to apply the oil on the upper surface of the guiding slots of the casing and on the outer contact surface of the hammer (see the picture on the inner page of the cover). Remove all excess oil.

Before shooting always pull through the barrel with a dry patch. At very low temperatures remove the oil from all accessible parts or apply a lubricant intended especially for such conditions. Use thick preserving agents such as preserving grease only for a long-term storage in severe climatic environments and remove it thoroughly before use from all parts of the firearm.

**Waste Management**

When used properly, the materials used in the product and packaging have no adverse effects on human health or the environment. When disposing of the product or its packaging, metal parts (steel and non-ferrous metals), plastics, wood, paper and cardboard should be stored separately in collecting containers intended specifically for that purpose.

## LIST OF PARTS

1 Barrel *	24 Firing Pin Lug (A) *	47 Main Spring Support *	70 Magazine Body
2 Front Sight Base *	25 Firing Pin Spring *	48 Securing Pin *	71 Follower
3 Front Sight Base Screw (3x) *	26 Extractor *	49 Stock Screw Nut	72 Magazine Spring
4 Front Sight *	27 Extractor Pin *	50 Stock Screw	73 Magazine Housing Insert *
5 Front Sight Screw *	28 Extractor Spring *	51 Toothed LockWasher	74 Magazine Housing Insert Pin *
6 Front Sight Cover *	29 Cocking Lever	52 Stock *	75 Magazine Body
7 Fore-Stock Fixture	30 Recoil Spring *	53 Butt Plate *	76 Follower
8 Rear Sight *	31 Recoil Spring Rod *	54 Butt Plate Screw (2x) *	77 Magazine Spring
9 Rear Sight Screw (2x) *	32 Recoil Spring Carrier *	55 Sling Swivel Stud (2x) *	78 Bolt Lock *
10 Receiver	33 Trigger Mechanism Housing *	56 Fore-Stock *	79 Bolt Lock Spring *
11 Ramp Leveller *	34 Trigger Safety	57 Fore-Stock Screw	80 Bolt Lock Pin *
12 Ramp Leveller Pin *	35 Trigger Safety Pin *	58 Fore-Stock Plate	81 Firing Pin Spring Pin *
13 Barrel Screw (2x)	36 Trigger Safety Pin Spring *	59 Fore-Stock Plate Screw (2x)	82 Firing Pin Lug (B) *
14 Body Locking Pin	37 Trigger *	60 Magazine Body	83 Stock Ring
15 Ejector *	38 Trigger Pin	61 Magazine Plunger	
16 Ejector Pin	39 Trigger Spring	62 Magazine Plunger Spring	
17 Casing	40 Disconnecter *	63 Follower	
18 Magazine Housing	41 Disconnecter Pin *	64 Magazine Spring	
19 Magazine Catch	42 Disconnecter Spring *	65 Magazine Base Plate	
20 Magazine Catch Pin	43 Hammer *	66 Magazine Body	
21 Magazine Catch Spring	44 Main Spring *	67 Follower	
22 Bolt *	45 Hammer Insert (2x) *	68 Magazine Spring	
23 Firing Pin *	46 Hammer Pin *	69 Magazine Base Plate	
			The parts marked * differ according to versions, or as case may be in some versions are entirely missing.

## TROUBLESHOOTING

If the firearm is properly used and maintained, malfunctions will rarely occur. However, if such a situation does occur please observe the following instructions.

**CAUTION** - if a malfunction occurs, the risk of an accidental discharge is substantially higher. For this reason, when clearing malfunctions, follow the above mentioned Safety Instructions. Keep the rifle pointed in a safe direction, do not turn the rifle towards your or anyone else's body. Do not place your hands in front of the barrel!

Malfunction	Possible Cause	Remedy
A cartridge has not been fed into the chamber	Magazine is not fully inserted or is damaged. The rifle or cartridges are fouled (dirty). Unsuitable ammunition type.	Insert magazine properly or change magazine. Clean the rifle and cartridges and wipe them dry or as the situation dictates, slightly lubricate. Use a different type of ammunition.
Misfire	Defective cartridge. Firing Pin hole fouled (dirty) or improper lubricant was used in low temperature.	Follow the Safety Instructions according to point 19. Disassemble and clean the firing pin or use a low temperature lubricant.
A shot sounds "weak"	The cartridge has been activated but no powder load was inside the cartridge case.	Unload the rifle and check that the bullet has not obstructed the barrel. Firing with the gun in this condition can cause injury and damage the barrel
The spent case has not been ejected	Chamber, extractor or ammunition are dirty or unsuitable lubricant was used in low temperature.	Clean the rifle dry and/or lubricate lightly with a suitable agent. Use clean and new ammunition.

If you are not able to clear the malfunction in a manner described above, entrust the firearm to a competent gunsmith for inspection and repair.

## TECHNICAL SPECIFICATIONS

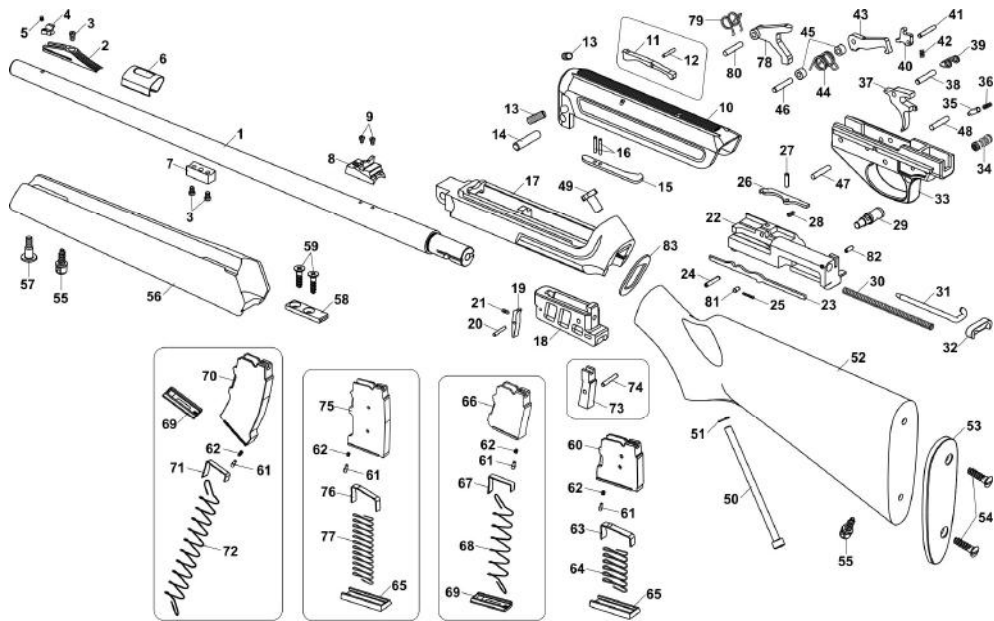
Model	Standard	Carbine	American	Tactical
Caliber	.22 LR, .22 WMR	.22 LR, .22 WMR	.22 LR, .22 WMR	.22 LR, .22 WMR
Overall Length [mm]	1000	890	997	840 - 923
Height [mm]	186	186	165	170
Width [mm]	57	57	55	60
Barrel Length [mm]	525	415	525	415
Sight Radius [mm]	max. 406	max. 277	-	-
Weight (with Empty Magazine) [kg]	2,65 / 2,8	2,5 / 2,6	2,6 / 2,8	2,7 / 2,8
Magazine Capacity [cartridges]	5 / 10	5 / 10	5 / 10	25 / 10
Trigger Pull [N]	max. 25 (max. 29*)	max. 25 (max. 29*)	max. 25 (max. 29*)	max. 25 (max. 29*)

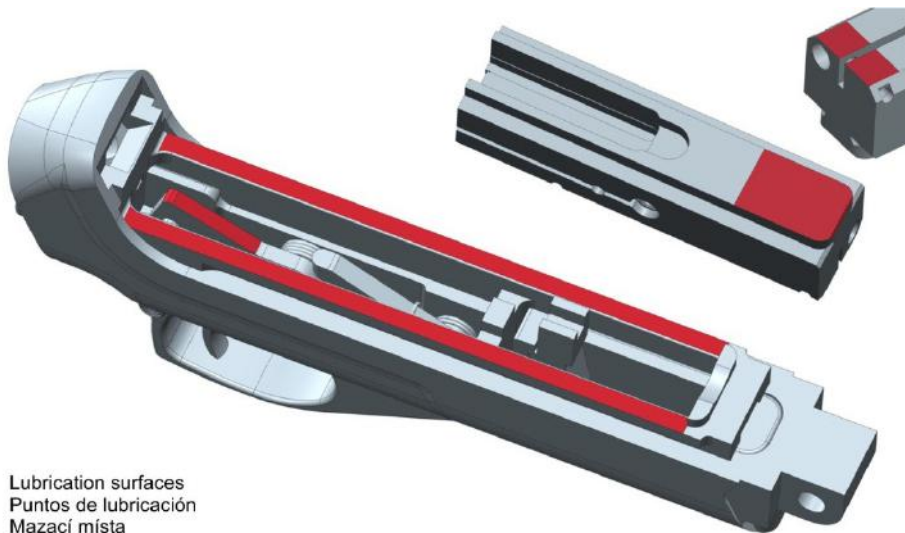
\* applies only for the version with two recoil springs

**LIST OF ILLUSTRATIONS**

1. The Names of Basic Parts
2. Magazine Removal
3. Loading the Rifle
4. Detail of Engaged Safety (A) and the Bolt Stop (B)
5. Removal of Body Locking Pin
6. Receiver and Barrel Removal
7. Cocking Lever Removal
8. Complete Bolt Disassembly
9. Use of the Guide Fork during the Assembly of the Recoil Springs (applies only for the version with two recoil springs)

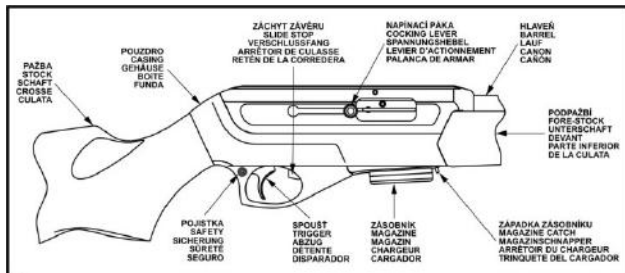
The Company, reserves the right to make any changes that are necessary to improve its products or to meet any requirements of manufacturing or marketing.





Lubrication surfaces  
Puntos de lubricación  
Mazací místa  
Schmierstellen  
Points de graissage





1



2



3



4



5



6



7



8



9